



The ALABAMA Game

RICE STADIUM ☆ 8 P. M. ☆ SEPT. 24, 1955

OFFICIAL PROGRAM — FIFTY CENTS

Congratulations to BEECH AIRCRAFT CORPORATION



Shown left to right: Mr. J. D. Reed, President of the J. D. Reed Company and Beechcraft Distributor; Mr. Jimmy S. Michael, prominent oil executive; Mr. Adolph A. Pfeffer, illustrious business and civic leader; V. L. "Hook" Gaston, Regional Sales Manager, Beech Aircraft Corporation.

The J. D. Reed Company of Houston, Texas, recently introduced the latest of many famous BEECHCRAFT firsts—the M-S 760 Beech Jet—to business and industrial executives of the great Southwest.

Mr. Jimmy S. Michael's reaction, upon returning from his demonstration flight in the M-S 760, was typical of many business executives who made similar flights. He extended the hand of congratulations to Mr. "Hook" Gaston of Beech Aircraft on the unveiling of a new era in executive air transportation.

Mr. Adolph A. Pfeffer who has purchased a total of fourteen airplanes from the J. D. Reed Company, added his comment that the M-S 760 Beech Jet proves you can always depend on the Beech Aircraft Corporation to provide the most advanced design, years ahead of anything in its field.

The J. D. Reed Company is proud to be participating in the traditional leadership of Beech Aircraft Corporation. We, too, want to extend sincere congratulations to the management of Beech Aircraft Corporation for the farsighted planning in bringing the new M-S 760 Beech Jet to the business flying world.



PARKER BROS. & CO., INC.

WORLD'S LARGEST PRODUCERS OF OYSTER SHELL

FOR

CEMENT AND CHEMICAL INDUSTRIES

FOR

HIGHWAY AND STREET CONSTRUCTION

PARKING AREAS AND DRIVES

PROCESSED TO SPECIFICATION

**HOT-MIX ASPHALTIC SHELL CONCRETE
READY MIX CONCRETE**

FOR

HOME AND INDUSTRY

GENERAL OFFICE

P. O. BOX 96

5303 NAVIGATION

HOUSTON 1, TEXAS

WA 6-4461



DR. WILLIAM V. HOUSTON
President, The Rice Institute

The football season provides an opportunity for us at the Rice Institute to welcome our friends of the Houston community and our fellow members of the Southwest Conference to the Rice campus.

We believe in the value of amateur athletics, in the value of competitive sports to a student body, and in the importance of keeping intercollegiate competition a campus activity. At the Rice Institute this year we hope to make it a friendly season of vigorous competition but of true friendship with our sister institutions and our guests.

W. V. HOUSTON
President

The affairs of The Rice Institute are managed by a Board of Governors, which is composed of seven life members and eight governors, who serve for a term of four years respectively.

THE PRESENT LIFE MEMBERS ARE:

GEORGE R. BROWN, Chairman

LAMAR FLEMING, Jr.

JOHN S. IVY

WILLIAM A. KIRKLAND

FREDERICK R. LUMMIS

J. NEWTON RAYZOR

GUS S. WORTHAM

THE PRESENT GOVERNORS ARE:

DANIEL R. BULLARD

ROBERT P. DOHERTY

FRANCIS T. FENDLEY

WILLIAM H. FRANCIS, Jr.

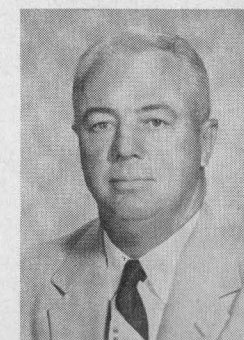
MALCOLM LOVETT

W. A. PARISH

JACK C. POLLARD

JOHN THOMAS RATHER, Jr.

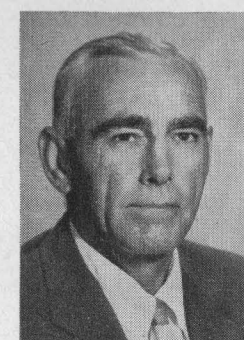
RICE FOOTBALL COACHING STAFF



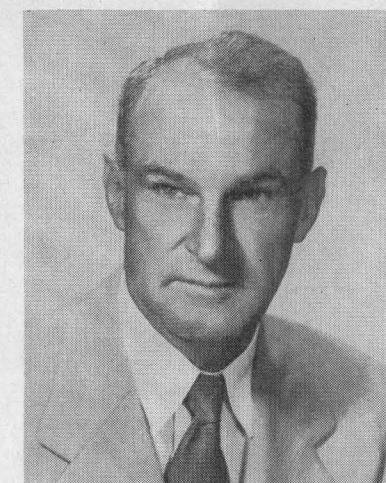
JOE DAVIS



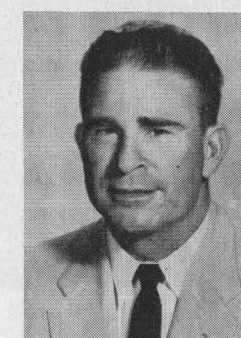
CECIL GRIGG



DELL MORGAN



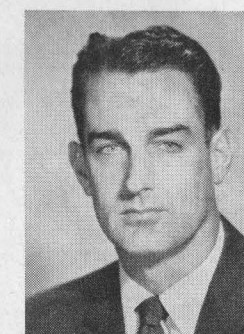
JESS NEELY
25th Year As Major College Head Coach



A. M. BALE



CHARLES MOORE



BILL BEALL

On this page are pictured the members of the Rice football coaching staff, one of the most experienced and capable groups in college football. As a unit, they average over 25 years each of service in their profession.

The head man of the organization is athletic director and head coach Jess Neely, who this season is in his 25th consecutive year as the head coach of a major college grid team. This is his 33rd year as a football coach, including service with the University of Alabama and with Southwestern at Memphis. Next January he is slated for induction as president of the American Football Coaches Association.

Among the assistants, veteran coaches Joe Davis and Cecil Grigg have been with Neely as aides at Rice for 16 years, with Davis his assistant at Rice and Clemson for 25 seasons, and Grigg on the Rice staff for 22 seasons. Aides "Red" Bale and Charlie Moore are Rice graduates with many years in the field after playing on Owl championship teams. Dell Morgan has been in the profession over 30 years at Rice and other major colleges. Only new member of the full time staff is Bill Beall in his first year here after switching from Arkansas State.



Best Wishes to the
BLUE AND GRAY

Cameron
 IRON WORKS, INC.

Represented for National Advertising by DON SPENCER COMPANY, INC., 271 Madison Ave., New York 16, N.Y.

RICE ATHLETIC STAFF MEMBERS



EMMETT BRUNSON
 Track and Field Coach
 and Business Manager
 of Athletics



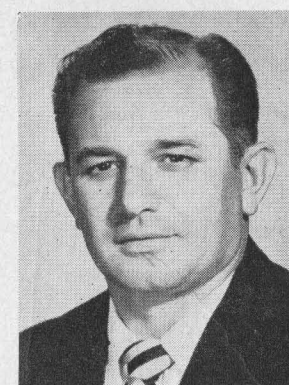
DR. H. E. BRAY
 Chairman, Faculty Committee
 On Outdoor Sports



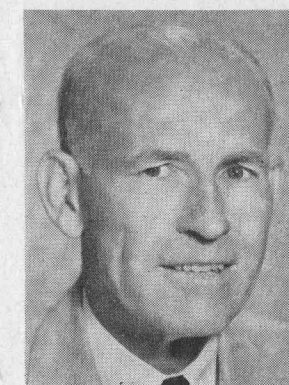
DON SUMAN
 Basketball Coach



BILL WHITMORE
 Sports News Director



EDDIE WOJECKI
 Head Trainer



WOOD BOULDIN
 Office Manager



MRS. CAROL ERICKSON
 Athletic Department
 Secretary

TONIGHT'S GAME

By BILL WHITMORE
Rice Sports News Director

Rice and Alabama—two natural rivals for this opener of the 1955 grid season—meet tonight for the first time since their celebrated Cotton Bowl encounter of New Year's Day, 1954.

As always when teams from the Southwest and Southeastern Conferences collide, this figures to be a rousing battle. The so-called "experts" have established the home standing Owls as a favorite because 'Bama is just starting out on a new coaching regime with J. B. "Ears" Whitworth at the helm. However, Rice's Jess Neely, his staff, and players are well aware that oftimes the inspiration to make good for the new skipper will inspire a team to better play than a study on paper of their chances would indicate. Witness impressive debuts for Paul Dietzel's L.S.U. Tigers (Rice's home rival next Saturday night) over highly ranked Kentucky and Jack Mitchell's Arkansas Razorbacks (Rice's Homecoming rival of November 5th) over Tulsa.

Whitworth, too, figures to have his Red Elephants from Tuscaloosa geared to a high pitch as he bids for a win over his old tutor. Friends for many years, the rival coaches for tonight first met at the University of Alabama when Neely was a coaching aide to Wallace Wade 1928-30 while Whitworth was a star guard for the Crimson Tide.

It was after leaving his job as an assistant at 'Bama that Neely began his very successful career as a head coach in major college ball with nine campaigns at Clemon (Rice's home rival of October 8th) and the past fifteen here at Rice. No doubt he would like to start his milestone 25th straight campaign as a major head coach and his 33rd year in the grid teaching profession on a high note with a triumph over one of his old schools in his career.

Neely's 15 years at Rice solidly establishes him as the dean of current Southwest Conference head coaches and he's had more seasons as the Owl's head man than any previous skipper (next high was the first coach, Phil Arbuckle, with ten campaigns).

Since this is the opener for both teams, there are no past performances to go by, but a study of personnel—and Rice's annual Blue-Gray intrasquad clash here last week before a splendid turnout of 15,000—strongly indicates plenty of passing by both teams.

The Owl's senior quarterback, "Pinky" Nisbet, was a bright star of the Blue-Gray game by completing 9 of 10 passes. Meantime, 'Bama has a bright star of its own, the aptly named Bart Starr. Both boys saw action as sophomores in that Cotton Bowl game, with Starr playing all the way on offense. As poised seniors, they are the key men of this game. If either or both should falter—or just need an occasional breathing spell—both have above par replacements. Rice is high on Nisbet's soph understudies, King Hill and Frank Ryan. 'Bama has still another senior letterman behind Starr in Albert Elmore.

If passing won't do the trick, the Owls can call on power running up the middle by lettermen full-backs Jerry Hall and Jack Throckmorton, and such halfbacks as Page Rogers, Bryant Stone, and Virgil Mutschink. The Tide counters with a flock of speedsters in Osbie Linville, Bill Hollis, Jim Bowdoin, and a 9.7 sprinter in Rufus Cassity.

Despite the spotlight on the backs, as usual it will be the line play that means so much in the outcome of the game. The Owls unveil a big, veteran forward wall headed by rugged All-American contender Eddie Rayburn (225) at tackle. However, two of his senior sidekicks may miss all or part of the opener because of pre-season injuries that have sidelined them for the September drills—Rayburn's fellow co-captain at end, Marshall Crawford, and Don Wilson at center. However, even if they don't make it, the Owls likely will start an all-letterman line to battle the competent 'Bama forwards with Nick Germanos at end a particular standout.

W. Cecil Sisson Mortgage Company

Complete Financial Service

Roy Bean, Loan Officer

401 Rusk Building

"The Official Watch for Timing this Game is Longines . . . The World's Most Honored Watch"

**1955
RICE
CO-CAPTAINS
AND
HEAD COACH**

From Left to Right

End
MARSHALL
CRAWFORD

Tackle
EDDIE RAYBURN

Coach
JESS NEELY



HUMBLE FOOTBALL

BROADCASTS-TELECASTS

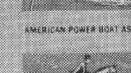
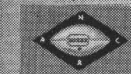
HUMBLE OIL
& REFINING COMPANY

**MORE
for your
MONEY**

Humble service and the outstanding quality of Humble products mean *more for your money* everytime your car needs gasoline, a wash and grease job, new tires or a new battery. Next time, and everytime, stop for service under the Humble sign.



The Rice Athletic Association Would Appreciate Your Patronizing Our Advertisers



Longines

THE WORLD'S MOST HONORED WATCH

Official Watch for the

RICE GAMES

Quality leader among the finest watches of the world is Longines—winner of 10 World's Fair Grand Prizes and 28 Gold Medals for excellence and elegance, highest Observatory Honors for accuracy.

Of special interest to sportsmen is a series of highly efficient Longines Automatic Watches employing an exclusive self-winding principle. They are shock-resistant, anti-magnetic, with unbreakable mainsprings; many are waterproof*. These outstanding Longines watches are priced from \$75 to \$195.

*as long as crystal, back and stem are intact.



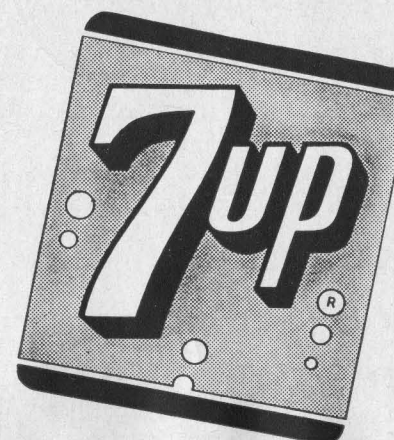
Longines
Oslo Automatic.
14K gold waterproof* case.
Sweep second hand. \$195.

SOLD AND SERVICED
BY MORE THAN
4000 LEADING JEWELERS WHO
PROUDLY DISPLAY THIS EMBLEM



Enjoy sparkling, crystal-clear 7-Up! So pure, so good, so wholesome that folks of *all* ages may "fresh up" as often as they like. Get the 24-bottle family supply of 7-Up.

THE ALL-FAMILY DRINK!
YOU LIKE IT...IT LIKES YOU!



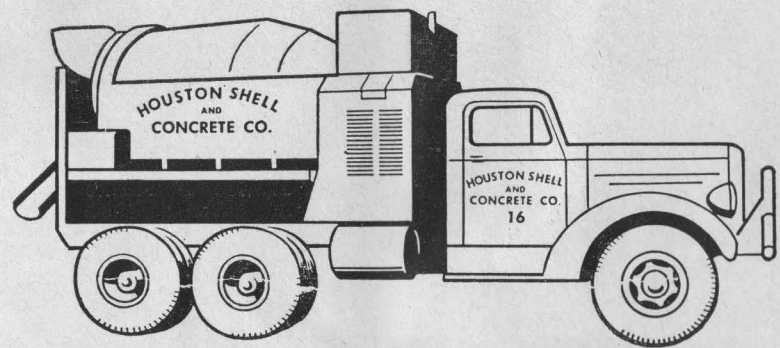
COPYRIGHT 1953 BY THE SEVEN-UP COMPANY

"OKAY, CHAMPS, LET'S fresh up NOW!"



Represented for National Advertising by DON SPENCER COMPANY, INC., 271 Madison Ave., New York 16, N.Y.

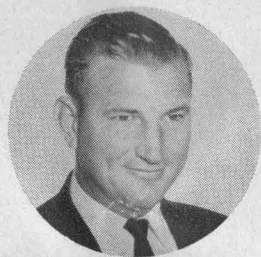
READY-MIXED CONCRETE



★ CEMENT-STABILIZED SHELL ★ ASPHALT TOPPING
★ SAND-STABILIZED SHELL ★ SAND
★ SHELL ★ GRAVEL ★ CEMENT



TOMMY HUDGENS
Rice Class "50"



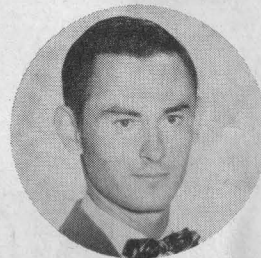
HARMON CARSWELL
Rice Class "51"



O. D. PUGH
Rice Class "50"



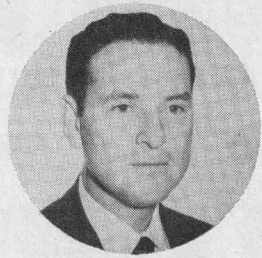
BILLY BURKHALTER
Rice Class "52"



HORTON NESRSTA
Rice Class "54"



BOBBY LANTRIP
Rice Class "50"



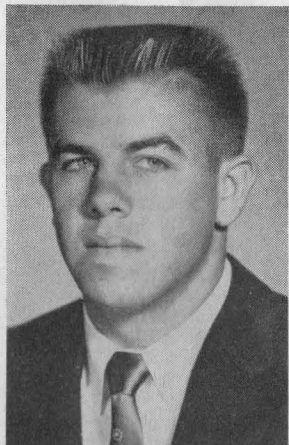
HARRY ELLISON
Rice Class "42"

HOUSTON SHELL and CONCRETE CO.
PASADENA SAND and GRAVEL
BAYTOWN READY-MIXED CONCRETE

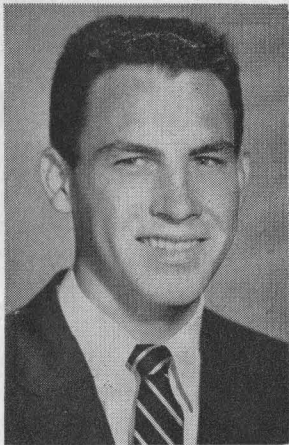
'55 RICE OWLS



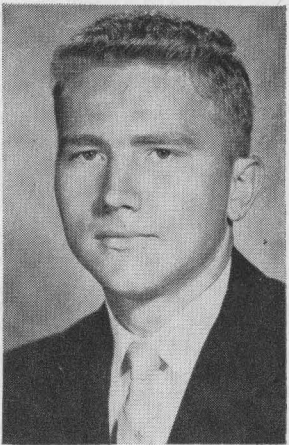
Phil Harris



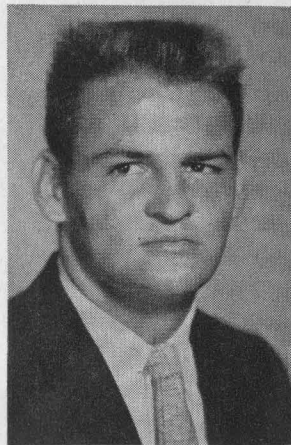
King Hill



Frank Ryan



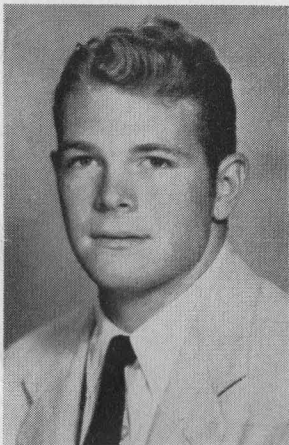
John Nisbet



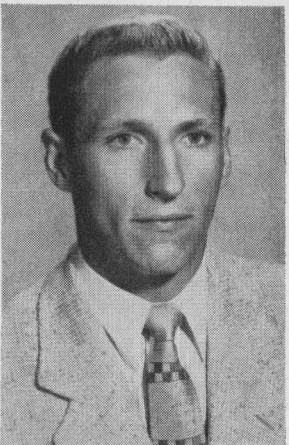
Virgil Mutschink



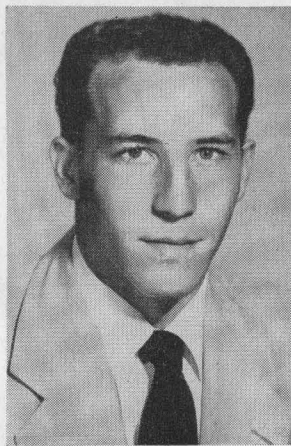
Gene Johnson



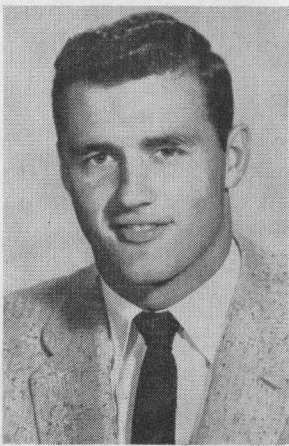
Page Rogers



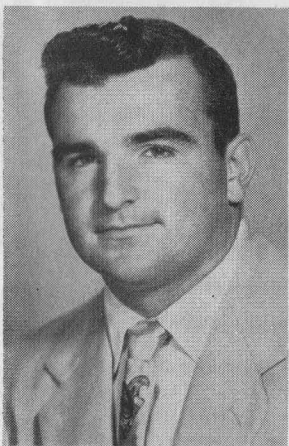
Paul Zipperlen



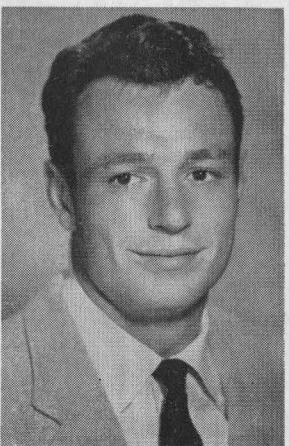
Bryant Stone



Jack Throckmorton



Jerry Hall



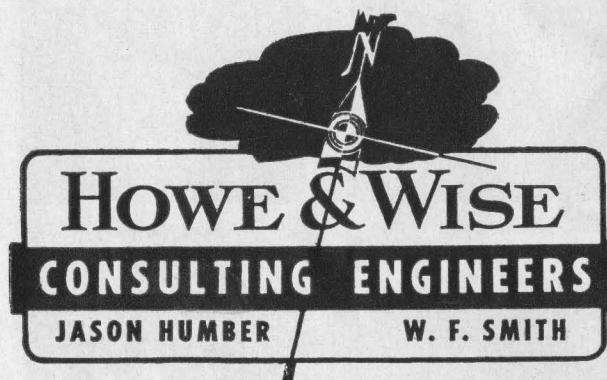
David Kelley

REX THE TAILOR

Clothing Headquarters for Rice Students

315 TRAVIS

HOUSTON, TEXAS



HOWE & WISE
CONSULTING ENGINEERS
JASON HUMBER W. F. SMITH



producers of
Heavy Chemicals
for industry
CONSOLIDATED CHEMICAL
INDUSTRIES INC.
640 ESPERSON BUILDING • HOUSTON 2, TEXAS

SYSTEMATIC
AVING
PELLS
UCCESS



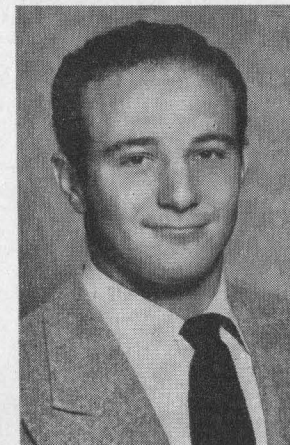
3% ON SAVINGS

University
SAVINGS & LOAN ASSOCIATION
KIRBY & AMHERST • IN THE VILLAGE

SAVING ACCOUNTS INSURED

The Rice Athletic Association Would Appreciate Your Patronizing Our Advertisers

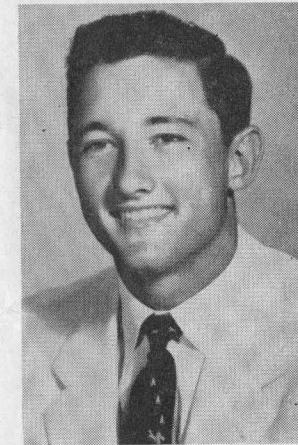
'55 RICE OWLS



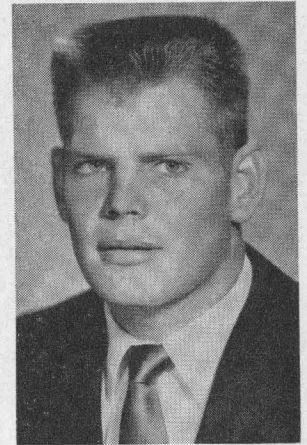
Mendel Laviage



Homer Borgstedte



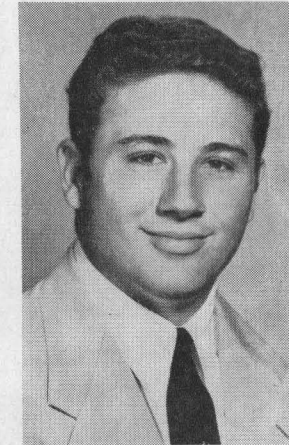
Dick Bowen



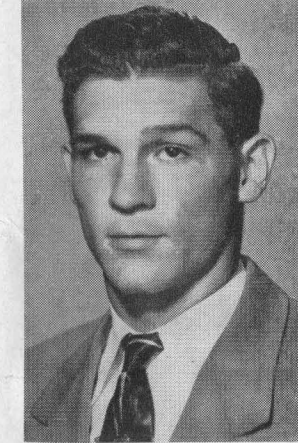
Don Gillis



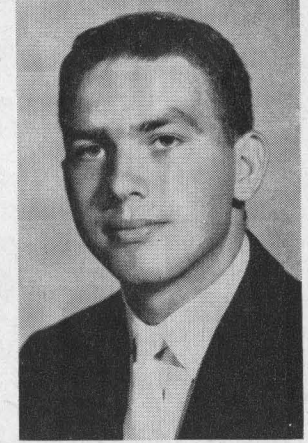
Lew Harpold



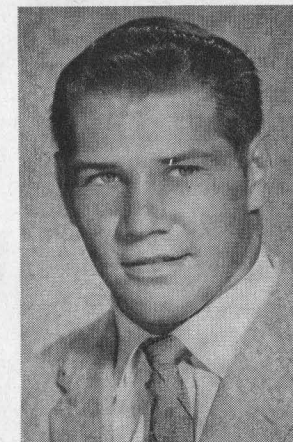
Tommy Siragusa



R. E. Wortham



Jerry S. Harris



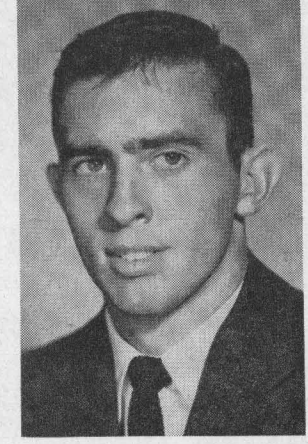
Matt Gorges



James Steitle



Larry Whitmire



Charles Thompson



HOLMES McNEELY
Rice Band Director

RICE BAND

Adding a great deal to the pageantry of college football is the stirring music of the bands. The hard working members of the outstanding Rice Band entertain at all the grid games, as well as home conference basketball games and on various other occasions. This unit of approximately 70 instruments is under the capable direction of Holmes McNeely, whose experience in this field dates back to the early thirties when he was a member of the famed Hardin-Simmons Cowboy Band that received international renown on concert tours to Europe.

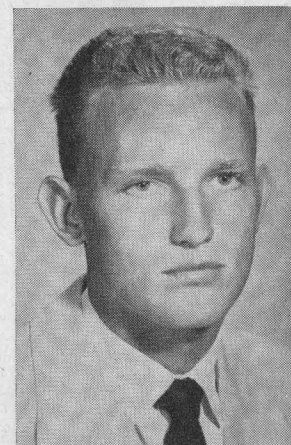
Stepping high and leading the way as the band marches down the field will be the 1955 drum major, Larr Burton, and the five attractive drum majorettes—Misses Barbara Simons, Mary Ann Kopriva, Maurine Bell, Linda Davis, and Mary Beth Harris. Rice Institute was especially honored last season when one of the majorettes, Miss Marilyn Webb (now Mrs. Sammie Burk) was named the National Campus Queen by Sport Magazine in a nationwide poll of sports fans.



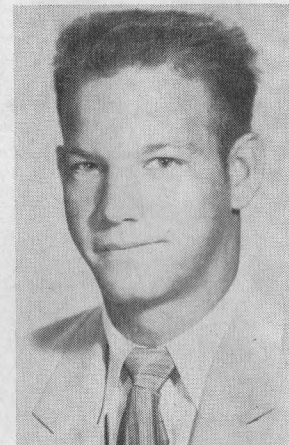
ENGINEERING DRAWING LAB

The Rice Athletic Association Would Appreciate Your Patronizing Our Advertisers

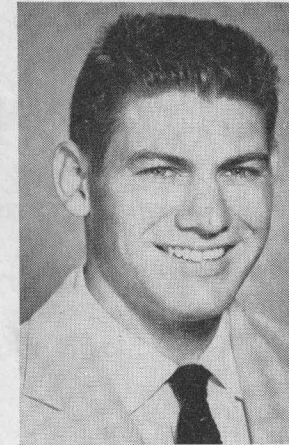
'55 RICE OWLS



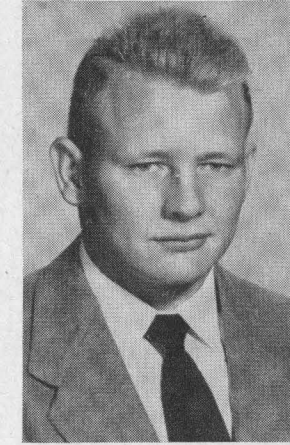
James Peters



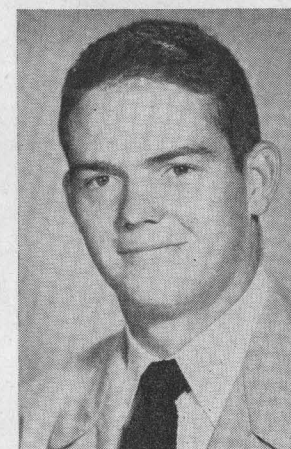
James Briggs



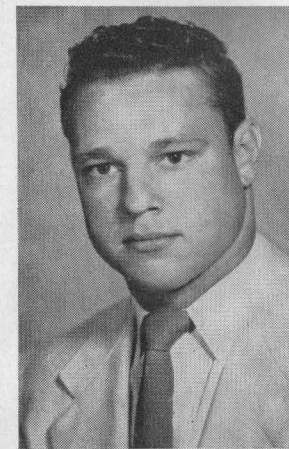
Don Wilson



Albert Johnson



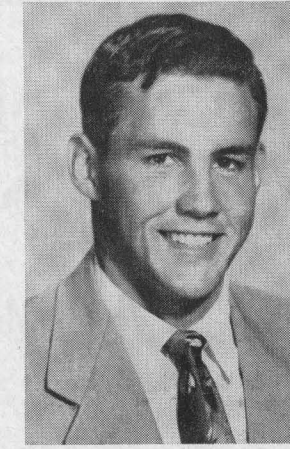
Marshall Crawford



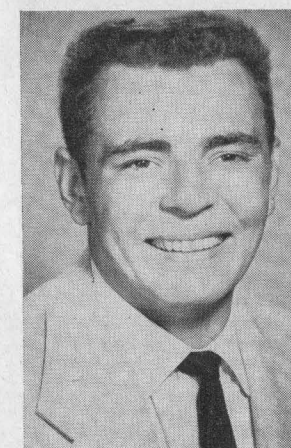
Bob Woolbright



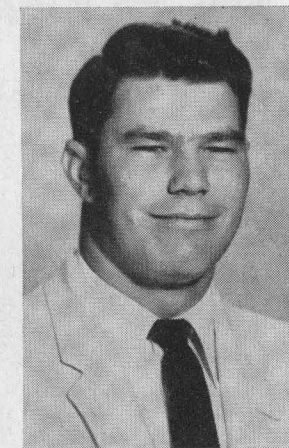
Louis Eisenwine



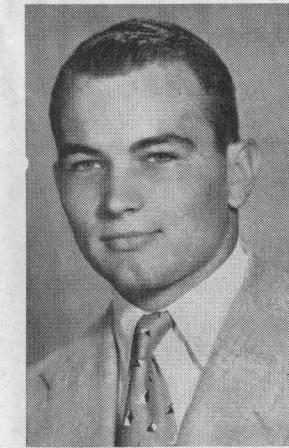
Donald Gee



Eddie Rayburn



Jean Barras



Orville Trask



Jay Riviere

There's a model on the RHEEM TEAM to fit your heating needs

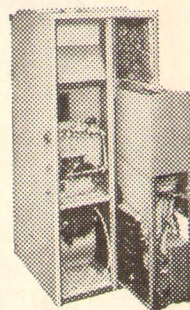
Every
RHEEM
Gas Furnace is
FIRE-TESTED



- Central Heating Systems
 - Wall Heaters
 - Attic and Floor Furnaces
- and

Finally, heating and cooling
in one LOW-COST package

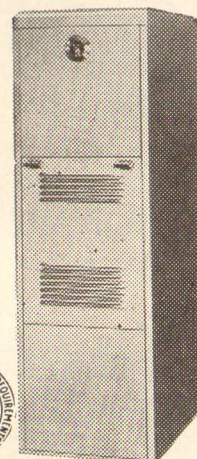
the Rheem
Year 'Rounder



You Can
Rely On



ATTACHMENT OF A LIFETIME OF MONEY
Guaranteed by
Good Housekeeping



Wholesale Distributors

STAR STEEL SUPPLY CO.

Phone JA 9-4111

For the name of your
nearest dealer or
any information

Call one of us.

We will be happy
to serve you.

R. E. Gassaway

M. R. Teague

G. A. Scott



9411 Almeda Rd.

P. O. Box 14242

Houston 21, Texas

The Rice Athletic Association Would Appreciate Your Patronizing Our Advertisers

DRINK
Coca-Cola
IN BOTTLES

Delicious and
Refreshing



REFEREES' SIGNALS

- 1 Offside
- 2 Illegal procedure or position
- 3 Illegal motion
- 4 Illegal shift
- 5 Illegal substitution
- 6 Delay of game
- 7 Personal foul
- 8 Clipping
- 9 Roughing the kicker
- 10 Unsportsmanlike conduct
- 11 Illegal use of hands and arms
- 12 Intentional grounding
- 13 Illegally passing or handing ball forward
- 14 Forward pass or kick catching interference
- 15 Ineligible receiver downfield on pass
- 16 Ball illegally touched, kicked or batted
- 17 Incomplete forward pass, penalty declined, no play or no score
- 18 Crawling, helping runner or interlocked interference
- 19 Ball dead
- 20 Touchdown or field goal
- 21 Safety
- 22 Time-out
- 23 First down
- 24 Ball ready for play
- 25 Start the clock

COPYRIGHT 1955, THE COCA-COLA COMPANY

SEE PAGE 20 FOR PENALTIES

HOUSTON COCA-COLA BOTTLING COMPANY ★ 2800 BISSENET

RICE

PROBABLE STARTING LINEUP

No.	Name	Position
83	JAMES PETERS	LE
71	ORVILLE TRASK	LT
77	JAY RIVIERE	LG
50	JERRY S. HARRIS	C
63	LEW HARPOLD	RG
76	EDDIE RAYBURN	RT
84	MARSHALL CRAWFORD	RE
23	PINKY NISBET	QB
48	PAGE ROGERS	LH
32	BRYANT STONE	RH
44	JERRY HALL	FB

THE RICE SQUAD

11 Borgstedte, LH	64 Siragusa, RG
14 Laviage, RH	65 Wells, LG
15 Zipperlen, LH	66 Steitle, RG
18 Bowen, RH	68 Wortham, RG
22 Stuart, QB	69 Kunkel, RT
23 Nisbet, QB	70 Pannell, LT
24 Ryan, QB	71 Trask, LT
25 Harris, QB	72 Barras, RT
26 Hill, QB	73 Whitmire, LT
31 Bergstrom, FB	74 White, RT
32 Stone, RH	75 Phillips, LT
42 Throckmorton, FB	76 Rayburn, RT
43 Williams, LH	77 Riviere, LG
44 Hall, FB	78 Thompson, LT
45 Kelley, FB	79 Cauley, LT
46 Fife, LH	80 Shelley, RE
47 Mutschink, LH	81 Woolbright, RE
48 Rogers, LH	82 Eisenwine, LE
49 Johnson, RH	83 Peters, LE
50 S. Harris, C	84 Crawford, RE
51 Gillis, C	85 Merritt, LE
54 Wilson, C	87 Held, LE
55 Johnson, C	88 Briggs, RE
56 Crawford, C	89 Mantor, LE
60 Gorges, LG	90 Gee, LE
61 Buis, LG	96 Pasemann, RT
63 Harpold, RG	



ALABAMA

PROBABLE STARTING LINEUP

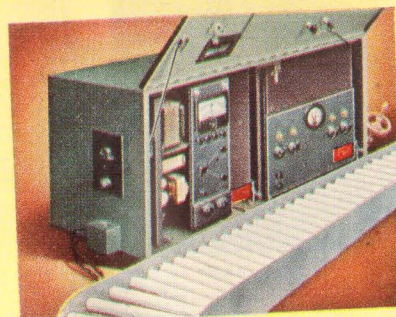
No.	Name	Position
81	DAN COYLE	LE
71	ALVIE ELLETT	LT
75	JIM CUNNINGHAM	LG
52	KNUTE CHRISTIAN	C
67	BO COLLINS	RG
72	DOUG POTTS	RT
80	NICK GERMANOS	RE
10	BART STARR	QB
24	OSBIE LINVILLE	LH
31	BILL HOLLIS	RH
42	JIM BOWDOIN	FB

THE ALABAMA SQUAD

10 Starr, QB	61 Kelley, LG
14 Elmore, QB	62 Veazey, LG
15 Burch, QB	63 Dembski, RG
20 Cole, LH	64 Scott, RG
21 Walls, LH	65 Maxwell, RG
22 Cassity, LH	66 Sington, RG
23 Woodward, LH	67 Collins, LG
24 Linville, LH	71 Ellett, LT
25 Keahy, LH	72 Potts, RT
31 Hollis, RH	73 Lynch, RT
32 McBee, RH	74 Vickery, LT
33 Lumpkin, RH	75 Cunningham, LT
34 Brown, RH	76 Baxter, RT
40 Kinderknecht, FB	77 Thomas, LT
41 Walker, FB	78 Thompson, RT
42 Bowdoin, FB	80 Germanos, RE
43 Stone, FB	81 Coyle, LE
44 Loftin, FB	82 Lambert, LE
45 Daniel, FB	83 Donaldson, RE
50 Autrey, C	84 Pritchett, RE
51 Brooks, C	86 Forbus, LE
52 Christian, C	87 Poole, RE
53 Curreri, C	88 Waller, RE
54 Graham, C	
55 Reed, C	

Only Chesterfield is Made the Modern Way—with *AccuRay*

Today—discover for yourself what modern science can do to increase your cigarette enjoyment! Try Chesterfield—the cigarette made the modern way... measurably smoother... cooler... best for you!



THIS IS IT! L&M has the purest and best filter your lips ever touched... the pure, white Miracle Tip. What's more, L&M gives you a rich, good tasting, and fully satisfying smoke. No wonder smokers everywhere say, "L&M's got everything!"

L&M—America's Best Filter Cigarette!

PURE WHITE



There's nothing like a Coke

PENALTIES

LOSS OF FIVE YARDS

1. Taking more than five times out during either half (except for replacement of injured player).
2. Illegal delay of game.
3. Failure to complete substitution before play starts.
4. Violation of kickoff formation.
5. Player out of bounds when scrimmage begins.
6. Putting ball in play before Referee signals "Ready-for-play".
7. Failure to maintain proper alignment of offensive team when ball is snapped. Also, backfield man illegally in motion.
8. Offside by either team or encroachment on neutral zone.
9. Attempt to draw opponents offside.
10. Crawling by runner.
11. Illegal forward pass (includes intentional grounding of forward pass). Also loss of down.
12. Taking more than two steps after Fair Catch is made.
13. Player on line receiving snap.
14. Any violation of the scrimmage formation.

LOSS OF FIFTEEN YARDS

15. Team not ready to play at scheduled time.
16. Violation of rules during intermission.
17. Illegal return of suspended player.
18. Interference by member of offensive team with defensive player making pass interception. (Also loss of down.)
19. Interference with opportunity of player of receiving team to catch a kick.
20. Illegal use of hands or arms by offensive player.
21. Tackling or blocking defensive player who has made fair catch.
22. Roughing the kicker.
23. Piling up, hurdling, clipping.
24. Tackling player out of bounds, or running into player obviously out of play.
25. Coaching from sidelines.
26. Failure to stop one full second following shift.
27. Defensive holding.
28. Invalid Signal for Fair Catch.

OTHER PENALTIES

29. Striking an opponent with fist, forearm, elbow or locked hands, kicking or kneeling — Mandatory disqualification of offending player plus loss of fifteen yards.
30. Foul within the one yard line—half the distance to the goal.
31. Interference by defensive team on forward pass—passing team's ball at spot of foul.
32. Forward pass being touched by ineligible receiver beyond the line of scrimmage—loss of fifteen yards from spot of preceding down and loss of a down.
33. Illegal touching of kicked ball within opponent's ten yard line — touchback.
34. Flagrantly rough play or unsportsmanlike conduct — Mandatory disqualification plus loss of fifteen yards.
35. Eligible pass receiver who goes out of bounds and later touches a forward pass — loss of down.

SEE PAGE 17 FOR OFFICIAL SIGNALS

DRINK Coca-Cola IN BOTTLES

"COKE" IS A REGISTERED TRADE MARK

HOUSTON COCA-COLA BOTTLING COMPANY ★ 2800 BISSONNET

ENJOY THE GAME WITH

foremost ICE CREAM

THE GREAT NAME IN DAIRY PRODUCTS

FIRST STATE BANK of BELLAIRE

Serving Bellaire and Adjacent Area

AUTO TELLER SERVICE

FIRST STATE BANK

BELLAIRE, TEXAS

MOhawk 4-3413

5123 BELLAIRE BOULEVARD

MEMBER FEDERAL DEPOSIT INSURANCE CORPORATION

LIFE INSURANCE

is as American as the Great Game of Football

See your Great Southerner when he calls

And join the millions who protect their families through Life Insurance

80%* of the nation's families now own protection through Life Insurance

GREAT SOUTHERN Life Insurance Company

Founded 1909

4310 Dunlavy Houston, Texas

*According to the Life Insurance Fact Book, 1955

The Rice Athletic Association Would Appreciate Your Patronizing Our Advertisers

Fine Printing

As one of the South's largest printing firms, Gulf Printing Company has the equipment and experienced personnel to give your printed message the distinction so necessary in attracting the eye and retaining the interest of the reader. Whether it be a catalog, broadside, brochure folder, book or magazine—if it comes from Gulf it bears the hallmark of fine printing.

GULF PRINTING CO.

3301 BUFFALO DRIVE



PROGRESS...

We have combined well over 100 years of practical experience and technical knowledge with honest endeavor . . . to manufacture **QUALITY PRODUCTS** that have gained the confidence and high regard of our customers everywhere.

Our **MODERN, UP-TO-DATE**, ever-expanding plant is capable of handling your requirements.

• Houston Owned
and Operated



UNIVERSAL PACKING & GASKET CO.

5200 CLINTON DRIVE • HOUSTON 20, TEXAS

5822

MEDICAL STAFF

In the very important field of prevention and treatment of athletic injuries, Rice Institute is fortunate to have the services of the well-qualified men pictured here. Dr. Hugh Welsh begins his 37th consecutive year as the team physician for the Rice Owls, having served in that capacity all but the first seven years of the school's grid history. Special consultants are Dr. Edward T. Smith and Dr. Jack Brannon.

The Owl's well-planned program of training methods, with use of the most modern of facilities in the spacious training room at Rice Gym, is under the direction of Eddie Wojecki, in his eleventh season at the school. Earlier this year, this veteran of over two decades in the field was named National Chairman of the National Athletic Trainers Association. He was a U. S. Olympic team trainer at Helsinki, Finland in 1952.



Dr. Brannon

Dr. Smith

Dr. Welsh

Trainer Wojecki

"THE MEN BEHIND THE SCENES"



There are many so-called "unsung heroes" who handle responsible duties in the conduct of a college athletic program with comparatively little public recognition since their work is not in the spotlight. Here are six men who do a top notch job for Rice's grid team who fit in that category. Left to right, J. B. Sorsby, manager of the equipment room and a Rice employe over 20 years; student trainer Louis Loeser, student managers Jim Neely and Anthony Navarro, student trainer Gene Antill, and student equipment manager Bill Keller.

AMERICAN GENERAL GROUP



Complete Insurance Coverage

American General Life Insurance Company
American General Investment Corporation
American General Insurance Company

RUSK BUILDING HOUSTON, TEXAS

The Rice Athletic Association Would Appreciate Your Patronizing Our Advertisers

50th Anniversary Year For The N. C. A. A.

This is the Golden Jubilee year for the National Collegiate Athletic Association.

On occasion of this anniversary, the thought comes to mind that few, if any, sports fans have missed reading or hearing news stories about activities by this administrative organization in the intercollegiate sports picture. But many persons still are a little vague as to just what is the N.C.A.A.

The universities and colleges of the nation have joined together in one association—the N.C.A.A.—for purposes of athletic discussion, legislation and administration at the national level. The organization is solely and completely responsive to the will of its members as expressed by their governing boards and chief executive officers. The N.C.A.A. concerns itself with any phase of college athletics which spreads across regional lines and becomes national in character.

Among the many diversified activities carried on by member institutions through the N.C.A.A. are to establish and maintain athletic standards . . . formulate and publish the official playing rules of college sports . . . conduct National Collegiate championship events in 13 sports . . . maintain the official national statistics and records of college sports . . . conduct studies toward developing solutions of athletic problems, such as television, post-season events, establish agreements on limitations on number of practice sessions and number of games to be played, etc. . . . assist in fund raising movements and selection of coaches and athletes for U. S. teams participating in the Olympics and

Pan-American Games . . . administer athletic group insurance program for medical coverage . . . maintenance of a large film library of National Collegiate Championship events. Although one of the smallest schools enrollment-wise of the 465 colleges and universities who have more than 130,000 students participating annually in some 26 sports, The Rice Institute has a splendid record in national college sports competition. Here are the Owls who have been national champions to date:

CLAUDE BRACEY—track—100 yard dash and 220 yard dash (1928)

BILL CHRISTOPHER—track—broad jump (1943)

BILL CUMMINS—track—120 highs and 220 low hurdles (1943)

BOBBY CURTIS—tennis—doubles (1947)

FRANK GUERNSEY—tennis—singles (1938, 1939)

WILBUR HESS—tennis—singles (1935)

SAM MATCH—tennis—doubles (1947)

VERN MCGREW—track—high jump (1950)

FRED WOLCOTT—track—220 yard low hurdles (1938, 1939, 1940)
120 yard high hurdles (1938, 1939)

In addition to these champions, many other outstanding Rice athletes have advanced very far against the nation's finest in college events in basketball and other sports. Just a few months ago, for instance, sophomore John Garrett went to the finals of the National Collegiate golf tourney to rank second among over 1,000 college golfers in the country.

OWLS' ALL-HOUSTONIAN LINE



Few, if any, major colleges in the nation can boast of a "home grown" line to match the '55 Owls. Especially familiar to Houstonians who saw them play in the fine high school program here before going to Rice are (l to r): tackle Eddie Rayburn from Lamar, guard Lew Harpold from Lamar, center Don Wilson from San Jacinto, guard Jay Riviere from Lamar, and tackle Orville Trask from San Jacinto.

THE RICE INSTITUTE

Rice is a privately supported, co-educational, *tuition free* university, that offers courses in the traditionally basic fields of Liberal Arts, Sciences, Engineering, and Architecture. The student body comprises approximately 1700 men and women students, with some 225 of these doing work toward advanced degrees. Because the Institute is able to offer all of the advantages of a privately supported institution *without charging its students tuition*, admission is on an academic competitive basis. Thus since all students are expected to show a fine record of achievement, the graduates are trained for leadership in the true American sense, a leadership won by personal effort in a field of equal opportunity.

The institute was founded by William Marsh Rice, who provided the original endowment. With its beautiful campus of three hundred acres, Rice opened its doors to students in 1912.

The President of Rice is Dr. William V. Houston, who came to the Institute in 1947 from the California Institute of Technology, where he was chairman of the Department of Physics and Mathematics. At Rice he heads a faculty that is noted for its scholarly attainment and academic research. Dr. Edgar Odell Lovett, now President Emeritus, served Rice as President from its opening in 1912 until the appointment of Dr. Houston.

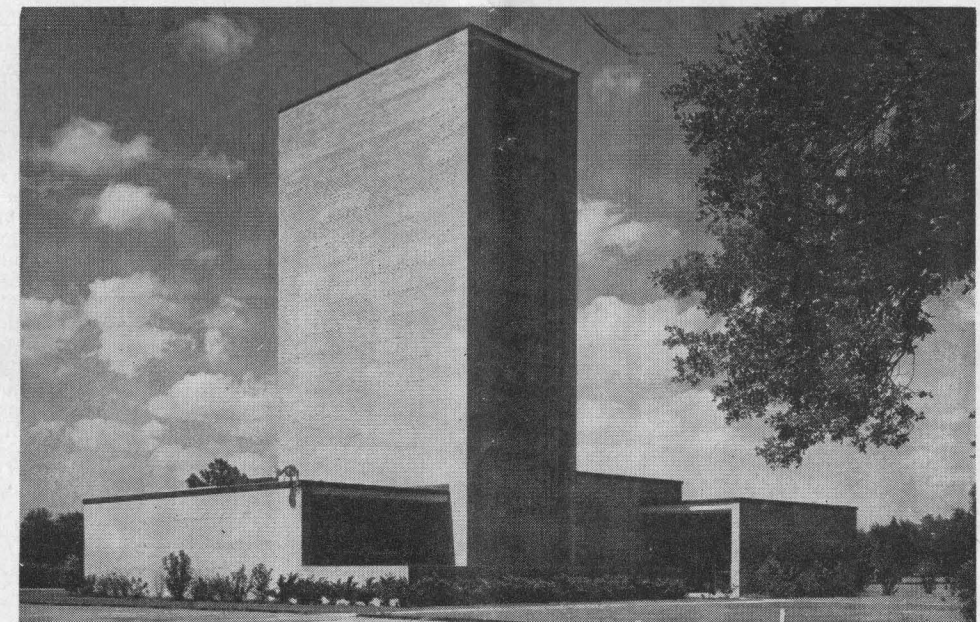
In addition to providing excellent instruction to undergraduates, the various departments at Rice direct much effort toward basic and fundamental

research. Rice scholars are constantly exploring areas of future importance, in engineering, in the sciences, in the humanities, and in architecture. In addition to Rice's numerous laboratories, the Fondren library with its 262,000 volumes constitutes a tremendous storehouse of technical and liberal knowledge of yesterday and today and the intellectual tools for constructing the world of tomorrow.

From the beginning, the Institute has been noted for its outstanding faculty and for the scholarly relationship that exists between the faculty member and the individual student. A fine sense of academic freedom and thought along with responsibility has attracted these scholars to Rice. During the past two years a faculty numbering some 130 full time members has published 276 learned articles and 14 books.

Rice graduates have established an excellent record in the major industrial complex that is the Southwest. Its engineering, science, architecture, and liberal arts graduates are making a significant contribution to industry, commerce, and the life of their respective communities.

In the development of the individual student educated for leadership in the community, Rice encourages the widest participation in the many and varied social and extracurricular activities available on the campus. These activities range from the various religious organizations, to intramural sports, to social events and dances.



NUCLEAR RESEARCH LABORATORY

Alabama 1955 Varsity Football Roster

No.	Player	Pos.	Age	Ht.	Wt.	Class	Exp.	Hometown
10	Bart Starr.....	QB	21	6-0	188	Sr.	3 VL	Montgomery
14	Albert Elmore.....	QB	21	6-2	192	Sr.	2 VL	Troy
15	Andy Burch.....	QB	20	5-10	181	Soph.	RS	Mobile
20	Thornton Cole.....	LH	20	5-11	184	Soph.	RS	Birmingham
21	Clay Walls.....	LH	19	6-0	168	Soph.	F	Bessemer
22	Rufus Cassity.....	LH	21	5-10	167	Jr.	Sq.	Atmore
23	Jimmy Woodward.....	LH	19	5-10	175	Soph.	F	Tuscaloosa
24	Osbie Linville.....	LH	21	6-1	176	Jr.	Sq.	Florence
25	Wayne Keahy.....	LH	19	5-11	175	Soph.	F	Talladega
31	Bill Hollis.....	RH	22	5-10	157	Sr.	1 VL	Biloxi, Miss.
32	Jerry McBee.....	RH	19	5-10	187	Soph.	F	Birmingham
33	Billy Lumpkin.....	RH	22	6-1	171	Jr.	Sq.	Florence
34	Marshall Brown.....	RH	21	6-0	175	Soph.	RS	Ladysmith, Wisc.
40	Don Kinderknecht.....	FB	23	5-11	195	Soph.	F	Hays, Kansas
41	Noojin Walker.....	FB	19	5-11	182	Soph.	RS	Faulkville
42	Jim Bowdoin.....	FB	20	6-1	174	Jr.	1 VL	Elba
43	Bill Stone.....	FB	24	5-11	191	Sr.	2 VL	Yukon, W. Va.
44	Jim Loftin.....	FB	19	6-3	201	Soph.	F	Dothan
45	Caroll Daniel.....	FB	19	5-11	174	Soph.	F	Athens
50	Dick Autrey.....	C	19	6-2	215	Soph.	F	Bessemer
51	Bill Brooks.....	C	20	6-0	191	Jr.	1 VL	Tuscaloosa
52	Knute Rockne Christian.....	C	22	6-0	192	Sr.	1 VL	Tuscaloosa
53	Bob Curreri.....	C	21	6-0	200	Soph.	RS	Baltimore, Md.
54	Glenn Graham.....	C	24	6-10	195	Soph.	RS	Florence
55	Larry Reed.....	C	19	5-11	188	Soph.	RS	Biloxi, Miss.
61	Max Kelley.....	LG	20	6-1	195	Jr.	1 VL	Cullman

Campus Cleaners

COLD STORAGE AND FURRIERS

Jackson 6-1403

6117 KIRBY DRIVE

HOUSTON 5, TEXAS

The South's Largest and Most Modern Fur Storage Vault

62	Louis Veazey.....	LG	22	6-0	201	Jr.	Sq.	Alex City
63	Hank Dembski.....	RG	22	6-3	214	Soph.	F	Buffalo, N.Y.
64	Arthur Scott.....	RG	21	6-2	220	Soph.	F	Jasper
65	Gerald Maxwell.....	RG	21	6-1	194	Soph.	F	Jasper
66	Fred Sington.....	RG	20	6-1	224	Soph.	RS	Birmingham
67	Bo Collins.....	LG	20	6-0	196	Jr.	Sq.	Yazoo City, Miss.
71	Alvie Ellett.....	LT	21	6-2	294	Jr.	Sq.	Owen Cross Roads
72	Doug Potts.....	RT	22	6-2	216	Jr.	1 VL	Evergreen
73	Curtis Lynch.....	RT	21	6-3	222	Sr.	2 VL	Wadley
74	Roy Vickery.....	LT	19	6-3	218	Soph.	F	Atlanta, Ga.
75	Jim Cunningham.....	LI	21	6-2	198	Jr.	Sq.	Winfield
76	Max Baxter.....	RT	19	6-1	209	Soph.	F	Pensacola, Fla.
77	Scott Thomas.....	LT	19	6-3	248	Soph.	F	Birmingham
78	Wes Thompson.....	RT	24	6-1	231	1 VL	Decatur
80	Nick Germanos.....	RE	21	5-11	187	Sr.	1 VL	Montgomery
81	Dan Coyle.....	LE	20	6-1	191	Jr.	1 VL	Birmingham
82	Jerry Lambert.....	LE	23	6-0	190	Jr.	1 VL	Alabama City
83	Paul Donaldson.....	RE	21	6-2	207	Sr.	1 VL	Floral
84	Jim Pritchett.....	RE	22	6-0	192	Jr.	Sq.	Birmingham
86	Roy Forbus.....	LE	20	6-3	186	Soph.	RS	Alex City
87	John Paul Poole.....	RE	22	6-2	186	Jr.	Sq.	Florence
88	Bob Waller.....	RE	20	6-0	201	Soph.	F	Opp

"The Official Watch for Timing this Game is Longines . . . The World's Most Honored Watch"

1955 Rice Institute Owls Varsity Football Roster

No.	Player	Pos.	Age	Ht.	Wt.	Class	Exp.	Hometown
11	Homer Borgstedte.....	B	20	5-7	158	Jr.	1 Sq.	Brenham
14	Mendel Laviage.....	B	22	5-7	178	Sr.	2 Sq.	Houston
15	Paul Zipperlen.....	B	20	5-10	163	Jr.	1 Sq.	Rosebud
18	Dick Bowen.....	B	20	6-1	173	Jr.	1 Sq.	Corpus Christi
22	Terry Stuart.....	B	21	6-1	172	Jr.	1 Sq.	Joshua
23	John Nisbet.....	B	22	6-1	187	Sr.	2 VL	Houston
24	Frank Ryan.....	B	19	6-2	180	Soph.	FL	Fort Worth
25	Phil Harris.....	B	20	5-10	180	Jr.	1 Sq.	Burnett
26	King Hill.....	B	19	6-3	205	Soph.	FL	Freeport
31	Dick Bergstrom.....	B	19	5-11	190	Soph.	FL	Houston
32	Bryant Stone.....	B	21	5-9	170	Jr.	1 VL	Kerrville
42	Jack Throckmorton.....	B	20	6-2	210	Jr.	1 VL	LaMarque
43	Bobby Williams.....	B	20	5-10	170	Jr.	JC	Missouri City
44	Jerry Hall.....	B	21	6-1	195	Jr.	1 VL	Palestine
45	David Kelley.....	B	20	5-11	170	Soph.	FL	Houston
46	Lanny Fife.....	B	21	6-2	185	Jr.	JC	Mart
47	Virgil Mutschink.....	B	20	5-10	170	Soph.	FL	Giddings
48	Page Rogers.....	B	22	6-0	180	Sr.	1 VL	Houston
49	Gene Johnson.....	B	20	6-0	170	Soph.	FL	San Antonio
50	Jerry S. Harris.....	C	20	6-1	205	Jr.	1 Sq.	Marshall
51	Don Gillis.....	C	20	6-3	225	Jr.	JC	Corpus Christi
54	Don Wilson.....	C	21	6-3	210	Sr.	2 VL	Houston
55	Albert Johnson.....	C	20	5-11	202	Jr.	1 VL	Odessa
56	Pedro Crawford.....	C	20	6-0	190	Soph.	FL	Grandfalls
60	Matt Gorges.....	G	19	6-0	198	Soph.	FL	Harlingen
61	Jeff Buis.....	G	20	6-0	200	Jr.	JC	Sinton
63	Lew Harpold.....	G	23	5-10	194	Sr.	2 VL	Houston
64	Tommy Siragusa.....	G	23	5-11	195	Jr.	1 VL	Houston

Campus Cleaners

COLD STORAGE AND FURRIERS

Jackson 6-1403

6117 KIRBY DRIVE

HOUSTON 5, TEXAS

The South's Largest and Most Modern Fur Storage Vault

65	Travis Wells.....	G	19	6-0	205	Soph.	FL	Freeport
66	Jim Steitle.....	G	18	6-1	195	Soph.	FL	San Antonio
68	R. E. Wortham.....	G	23	5-11	190	Sr.	1 VL	Houston
69	Marvin Kunkel.....	T	19	6-1	210	Soph.	FL	Quitman
70	Bob Pannell.....	T	20	5-11	202	Soph.	1 SQ.	Corpus Christi
71	Orville Trask.....	T	21	6-4	230	Jr.	1 VL	Houston
72	Jean Barras.....	T	21	6-2	220	Jr.	1 Sq.	Port Arthur
73	Larry Whitmire.....	T	20	6-2	210	Soph.	FL	Corpus Christi
74	Claude White.....	T	19	6-2	205	Soph.	FL	Fort Worth
75	Don Phillips.....	T	19	6-2	235	Soph.	FL	Garrison
76	Eddie Rayburn.....	T	21	6-2	220	Sr.	1 VL	Houston
77	Jay Riviere.....	T	22	6-0	198	Sr.	1 VL	Houston
78	Charles Thompson.....	T	19	6-1	192	Soph.	FL	Paris
79	Jim Cauley.....	T	20	6-3	200	Soph.	FL	Kingsville
80	Charlie Shelley.....	E	20	6-4	190	Soph.	FL	Olton
81	Bob Woolbright.....	E	21	6-2	205	Jr.	1 VL	San Benito
82	Louis Eisenwine.....	E	21	5-11	184	Soph.	1 Sq.	Pecos
83	James Peters.....	E	20	6-1	188	Jr.	1 VL	Brenham
84	Marshall Crawford.....	E	22	6-2	195	Sr.	2 VL	Lamesa
85	Ed Merritt.....	E	23	6-3	205	Soph.	JC	Phoenix, Ariz.
87	John Held.....	E	21	6-1	185	Jr.	1 Sq.	Odessa
88	James Briggs.....	E	20	5-11	185	Jr.	1 Sq.	Smithville
89	David Mantor.....	E	19	6-1	180	Soph.	FL	Corpus Christi
90	Donald Gee.....	E	20	6-1	192	Jr.	1 Sq.	Burkburnett
96	Bob Pasemann.....	LT	20	6-2	210	Soph.	1 Sq.	Taylor

"The Official Watch for Timing this Game is Longines . . . The World's Most Honored Watch"

1955-56 Varsity Basketball Schedule—Rice Owls

December 1	(Thursday)	St. Mary's	at San Antonio
December 3	(Saturday)	Abilene Christian	at Houston
December 5	(Monday)	Lamar Tech	at Houston
December 8	(Thursday)	Oklahoma	at Houston
December 10	(Saturday)	Tulane	at Houston
December 12	(Monday)	Louisiana State	at Houston
December 19	(Monday)	Kansas	at Houston
December 21	(Wednesday)	Auburn	at Houston
†December 28–30	(Wed.–Fri.)	Southwest Conference Tourney	at Houston
January 4	(Wednesday)	*S. M. U.	at Dallas
January 7	(Saturday)	*Texas A. & M.	at Houston
January 10	(Tuesday)	*T. C. U.	at Houston
January 13	(Friday)	*Arkansas	at Fayetteville, Ark.
January 16	(Monday)	*Texas	at Houston
January 21	(Saturday)	*Baylor	at Waco
February 4	(Saturday)	Lamar Tech	at Beaumont
February 8	(Wednesday)	*T. C. U.	at Fort Worth
February 11	(Saturday)	*Arkansas	at Houston
February 14	(Tuesday)	*Baylor	at Houston
February 21	(Tuesday)	*Texas	at Austin
February 25	(Saturday)	*Texas A. & M.	at College Station
February 28	(Tuesday)	*S. M. U.	at Houston

* Southwest Conference game.

† SWC tournament played at Rice Gym, with all seven conference schools and guest team, The University of Southern California.

Each team plays a game a day for three days.

24 Game Schedule—16 home games (includes 3 SWC tourney games) and 8 road games.

South End Building Materials Co.

READY MIX CONCRETE
SAND — GRAVEL — CEMENT

South Houston Plant
5102 Galveston Road
Phone MI 5-3328

South Main St. Plant
Gassmer Drive and Post Oak
Phone MA 3-8379

Kirby Drive Plant, 4830 Kirby Drive — Phone JA 9-9131

Foote's Cafeteria

Houston's Finest Suburban
Dining Room

2 Blocks West of Stadium
Continuous Service 11:00 A.M. to 8:30 P.M.
2407 RICE BOULEVARD
7 Days a Week

★ The Southwest's
Finest
and reasonable, too!

WELDON CAFETERIA

4916 SOUTH MAIN

- Home of "Pik Nik Chik"
- Open Daily 11:00 a.m. to 8:30 p.m.
- Free Parking

Head-to-toe support

SPRING AIR
EXCLUSIVE Tri-Zone Foam Latex MATTRESS

PARKER BEDDING CO.
FRED PARKER JOEL PARKER

NEW
CONSTRUCTION
HORIZONS
THROUGH
ADVANCED
ENGINEERING

BROWN & ROOT, INC.
Engineers • Constructors
CABLE ADDRESS — BROWN-BILT
POST OFFICE BOX 3, HOUSTON 1, TEXAS

Drinks in Stadium are cooled with
Texas Ice "Sized Ice"

TEXAS ICE & FUEL
COMPANY

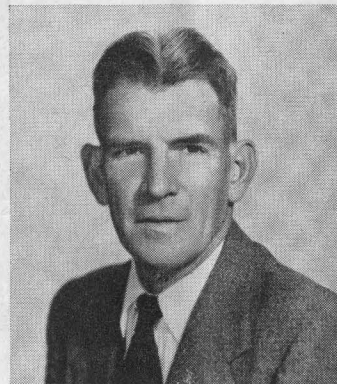
6301 Harrisburg

WAlnut 1-2154

THE UNIVERSITY OF ALABAMA



DR. OLIVER C. CARMICHAEL
President, Alabama University



HENRY "HANK" CRISP
Athletic Director



J. B. WHITWORTH
Head Football Coach

The University of Alabama was established in 1820, one year after Alabama was admitted to the Union, and was first opened to students in 1831. Thirty five young men comprised the first student body and the physical plant was not much larger with two dormitories, a chapel, chemistry building, and four faculty homes forming the campus.

Today, one hundred and twenty years later, the University has expanded and grown into a well planned seat of learning which has thousands of students studying, living, and playing in hundreds of class rooms, dormitories, and other University buildings. The passing years have seen many great moments and known many outstanding educators and administrators as the University of Alabama has solidified its place as the "Capstone" of the state educational system.

From the ashes of a fire swept campus following the War between the States, the University has developed into the modern institution of today, consisting of thirteen major divisions on the campus and two in Birmingham. Located at Tuscaloosa are: the College of Arts and Sciences, School of Chemistry, School of Commerce and Business Administration, College of Education, College of Engineering and School of Mines, School of Home Economics, School of Law, Graduate School, Extension Division, and

Summer School. A new fourteen million dollar medical center is in the making at the Medical College of Alabama in Birmingham. The School of Dentistry is also situated in Birmingham.

Alabama's military record is rich in tradition and color. From the 300 cadets who marched out to meet the enemy in 1865 to the present ROTC units and special classes assigned to the University by the armed forces today, the campus has felt the tread of thousands of American men and women. Since World War I more ROTC students have trained at the University than at West Point.

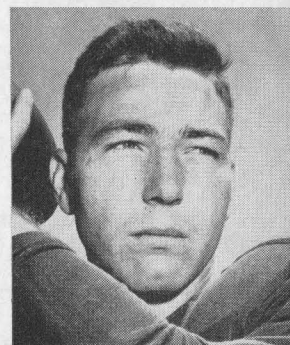
During the past half dozen post war years, a greatly enlarged student body has taxed the University facilities but a tremendous building program, which is still underway, has finally eased the situation. To fully retain the old grace and beauty of the 420 acre main campus area, a rebuilding and renewing project has also been carried on.

The first women students were admitted to the University in 1893 and today some 2000 coeds form a good percentage of the University enrollment. Dr. John M. Gallalee, long time member of the faculty and president since 1948, retired in July, 1953. Dr. Oliver C. Carmichael, a veteran educator and Alabama alumnus, succeeded Dr. Gallalee as president September 1, 1953.

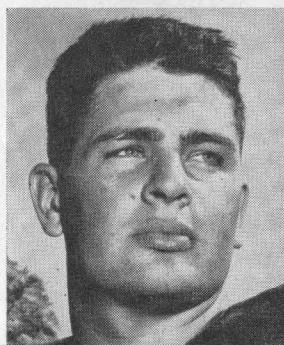
JERRY LAMBERT
End



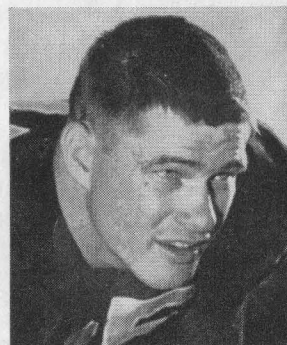
BART STARR
Quarterback



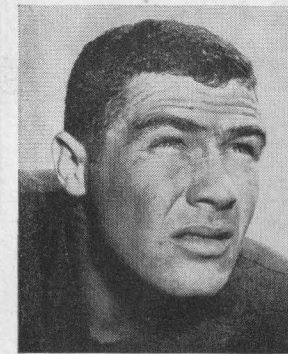
ALBERT ELMORE
Quarterback



TOMMY TILLMAN
End



ALABAMA PLAYERS



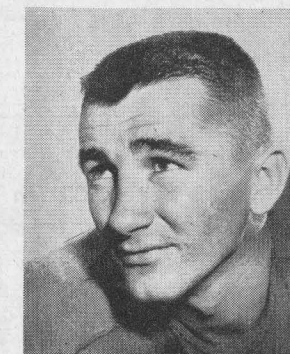
RUFUS CASSITY
Back



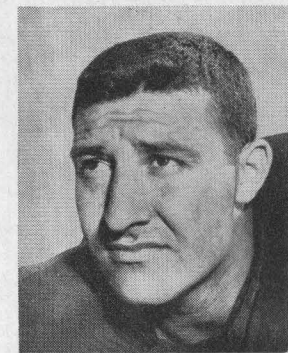
JIM BOWDOIN
Back



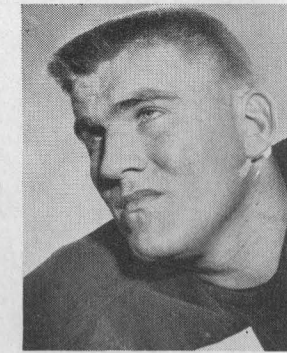
MARSHALL BROWN
Back



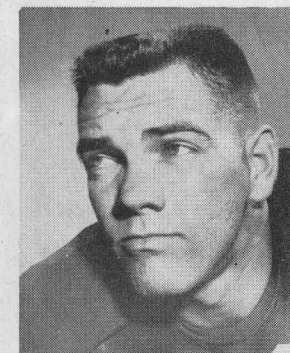
BILL HOLLIS
Back



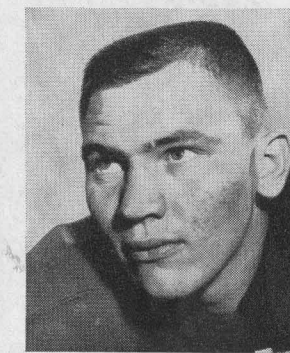
OSBIE LINVILLE
Back



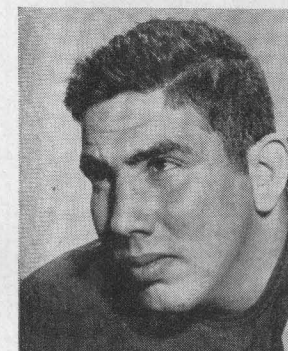
DOUG POTTS
Tackle



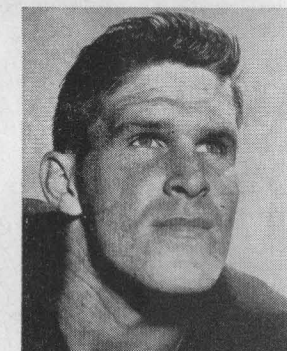
CURTIS LYNCH
Tackle



JIM CUNNINGHAM
Tackle



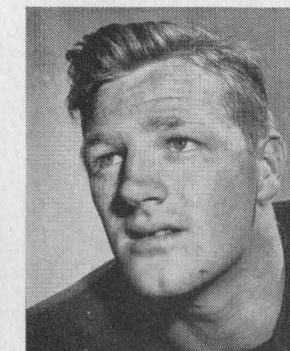
FRED SINGTON
Guard



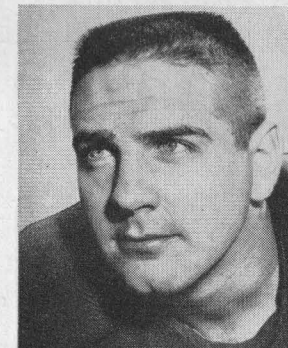
MAX KELLEY
Guard



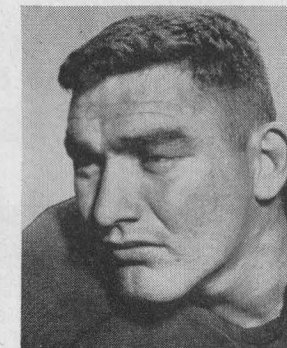
WES THOMPSON
Guard



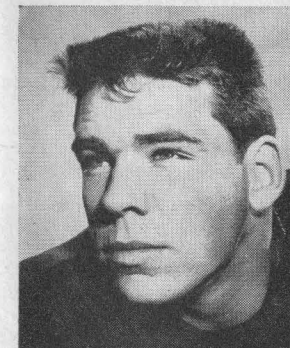
BO COLLINS
Guard



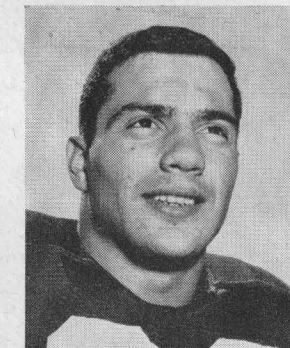
BILL BROOKS
Center



KNUTE ROCKNE CHRISTIAN
Center



DAN COYLE
End



NICK GERMANOS
End

RESIDENTIAL

"WANT TO BUY OR SELL—CALL"

COMMERCIAL

Jack Pannell

FOR BEST SELECTION OF HOMES

"Builder of Better Homes"

6211 KIRBY DR (In Village)

Office JA 9-3818

1955 RICE INSTITUTE CHEER LEADERS



L-R GEORGE BRIGHTWELL, JOAN RYBA, JEAN RYBA, BOB BUCK

BEFORE
AND
AFTER
THE
GAMES

Make the

Shamrock Hilton

Your Headquarters

Represented for National Advertising by DON SPENCER COMPANY, INC., 271 Madison Ave., New York 16, N.Y.

PIEDMONT IRON & STEEL CO.

INDUSTRIAL SUPPLIES • WHOLESALE HARDWARE
HOUSTON

At the games it's . . .

JASMINE FRANKS AND HAM SANDWICHES

(Always Government Inspected)

H O U S T O N P A C K I N G C O M P A N Y

• 3301 NAVIGATION • CAPitol 7-2361

TEXAS *National* BANK

OF HOUSTON

MEMBER FEDERAL DEPOSIT INSURANCE CORPORATION

BEST WISHES

TO THE OWLS

W. S. Bellows Construction Corp.

Ye Old College Inn

Ernest Coker — Your Host

6545 Main Street

JA 9-6484

5 to 11 P.M. Daily — Sunday 12 to 9 P.M.

Closed Sunday

FINE MODERN GAS APPLIANCES

MAKE BETTER LIVING
AN EASY GOAL

. . . and **NATURAL GAS**
SCORES

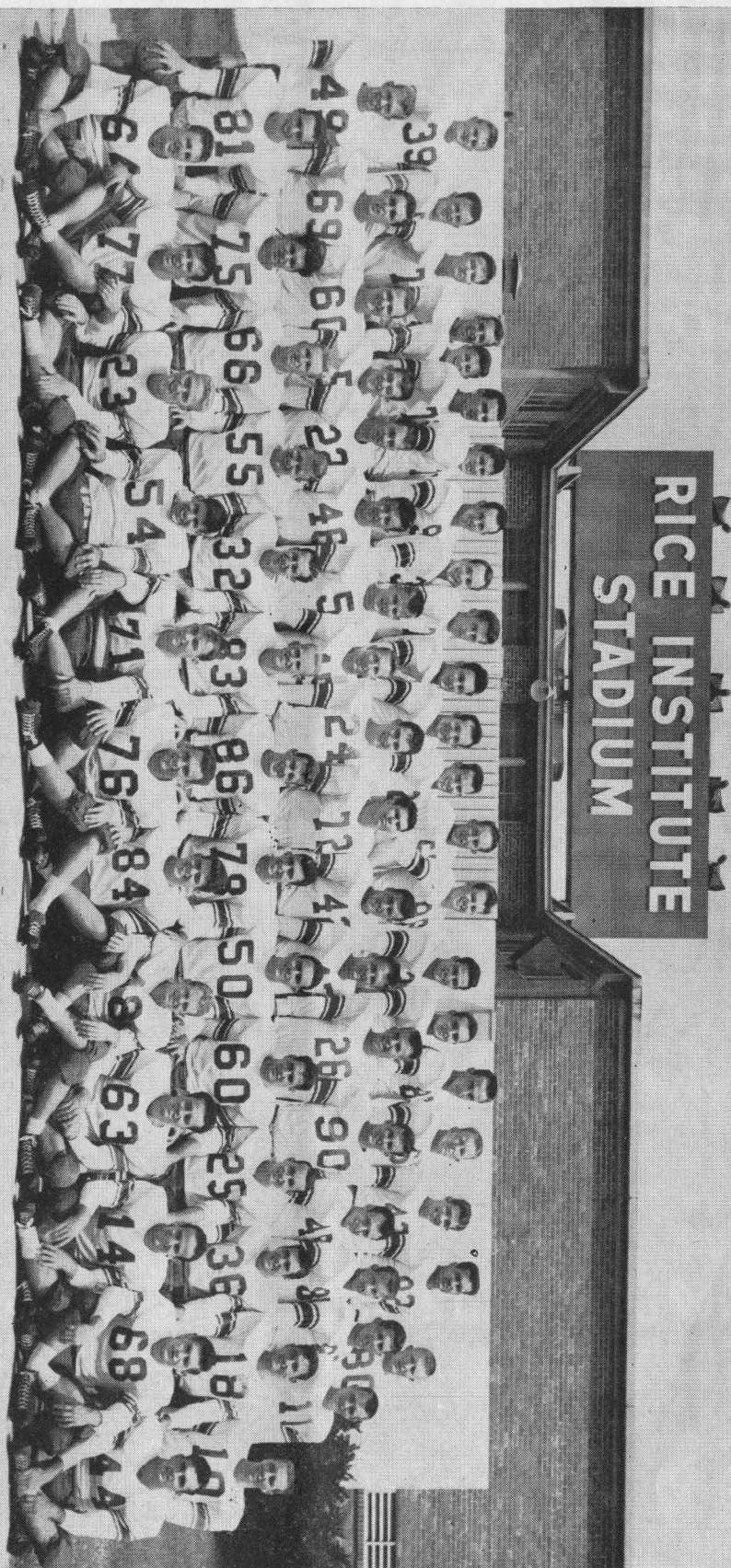
EXTRA POINTS

for

DEPENDABILITY and ECONOMY



SERVING THE *Gulf South*



Rice Freshmen Football

The Rice fans with an interest in the teams of the future each season get a good line on the annual new talent in the school's grid picture by following the play of the freshman team, known as the Owlets.

Under the excellent tutelage of Charlie Moore, the newcomers learn the Rice style of play and give the coaches and fans an opportunity to judge their abilities during a five-game campaign. Moore, captain of Rice's first Cotton Bowl team (the 1937 SWC champions), is recognized as an excellent teacher of the fundamentals and in bringing a group of young men together for the first time and developing a team in a hurry. This is his eighth year at this important task.

Although the Owlets play only two home games, Rice fans able to leave a day early before out-of-town varsity contests have a fine opportunity to watch the frosh in all three road clashes. The games with the S.M.U. and Texas freshman teams will be on Friday afternoons preceding the varsity games at Dallas and Austin respectively. The Baylor-Rice

frosh game at Waco is on the Friday preceding the Rice-T.C.U. varsity tilt at Fort Worth, just 90 miles north of Waco.

The two home games are with the Texas A. & M. "Fish" and Wharton Jr. College. The Owlet-Fish game will be for the benefit of the Holly Hall Home for the Aged, and officials have long range hopes for a new attendance record for a Southwest Conference freshman game for this one.

1955 RICE FRESHMAN FOOTBALL SCHEDULE

Oct. 14 (2:00)	S.M.U.	at Dallas
Oct. 21 (2:00)	Texas Shorthorns	at Austin
Nov. 3 (8:00)	Wharton Jr. College	at Houston (Rice Stadium)
Nov. 11 (8:00)	Texas A. & M. Fish	at Houston (Rice Stadium)
Nov. 18 (8:00)	Baylor Cubs	at Waco

1954 SEASON RESULTS

OWLETS	6	S.M.U.	0
"	27	Texas	6
"	39	Wharton JC	19
"	21	Texas A. & M.	34
"	20	Baylor	20

RODEO CAFE

Dickinson, Texas



**COMPLETE
METROPOLITAN
SERVICE
WITH
RESIDENTIAL
CONVENIENCE**



*Serving Southwest Houston, West
University Place and Southside Place*

AUTO TELLER SERVICE

**UNIVERSITY STATE
BANK**

**JA 6-1211
5117 KELVIN DRIVE AT TANGLEY**

**build your
BANK CREDIT**



**with BANK LOANS
THE NATIONAL
BANK OF COMMERCE**
OF HOUSTON

Gulf Building, Houston, Texas "The Bank for All the People"
MEMBER FEDERAL DEPOSIT INSURANCE CORPORATION

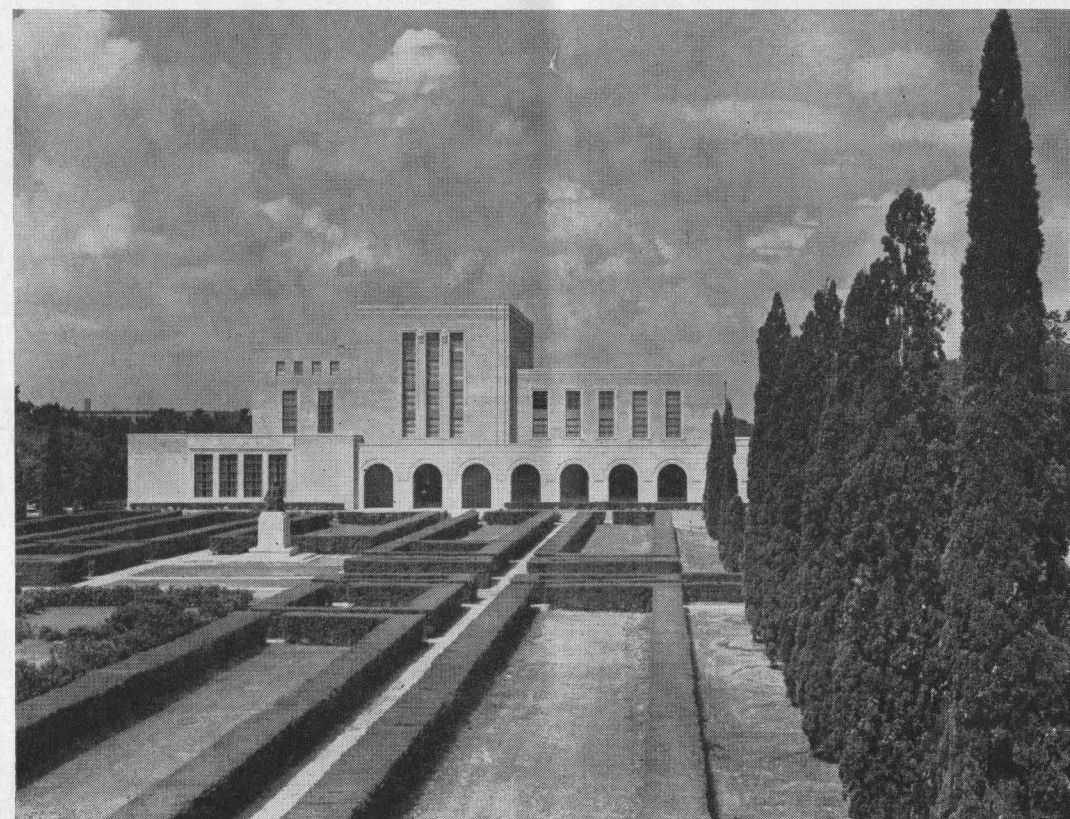
AT LUNCH OR DINNER

You can always enjoy a delicious meal in the
Warwick's Famous Crystal Dining Room
A PLEASURE TO SERVE YOU



R. T. CULLATHER, Manager

WARWICK HOTEL
AND APARTMENTS
Houston 1, Texas



FONDREN LIBRARY



**use BRANIFF's
aerial strategy
and miss the
highway scrimmage**

BRANIFF
International
AIRWAYS

In Houston, phone OL 4-6511, Rice Hotel
or your travel agent.



*Light up a Lucky—
it's light-up time!*

**LUCKIES
TASTE BETTER**

Cleaner, Fresher, Smoother!



**"IT'S
TOASTED"**
to taste
better!