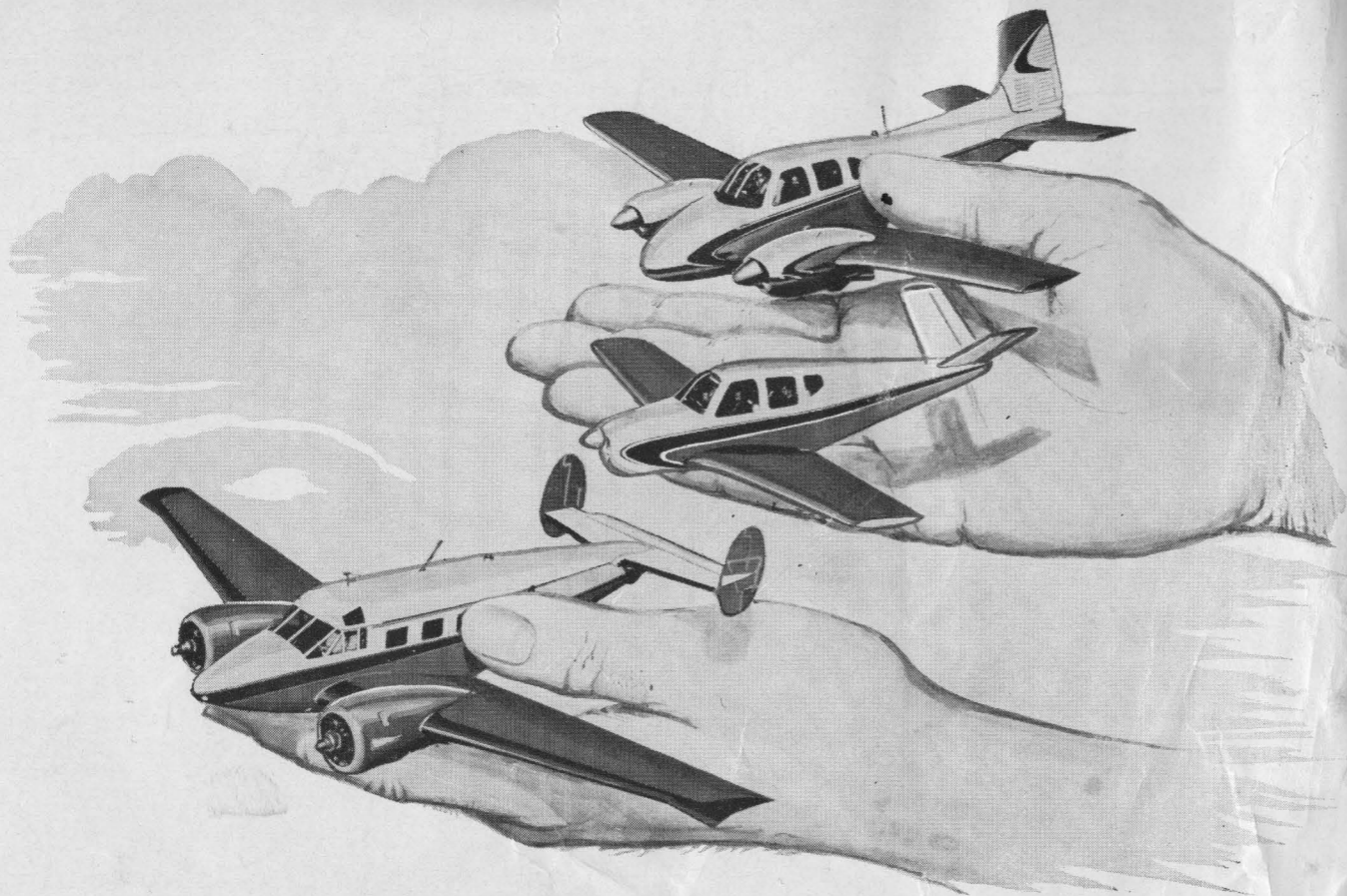


THE ALABAMA GAME

RICE CAMPUS • SEPT. 22, 1956
OFFICIAL PROGRAM... 50¢



Place your BEEHCRAFT in the
SKILLED HANDS
 of the **J. D. REED COMPANY**
 Beechcraft Service Specialists

When you depend on the J. D. Reed Company for your Beechcraft service and maintenance requirements you can rest assured that you are availing yourself of the best in workmanship, products and accessories.

Here at the J. D. Reed Company One-Stop Service Center we have the factory trained craftsmen and the equipment to do any job from periodic inspections to major overhauls. Further, we do the job the way you want it — promptly and dependably.

We will also make any type of special installation — long-range fuel tanks, custom interiors, custom radio installations, special instrument panels and many other modifications.

So whatever your requirements — consult the J. D. Reed Company. You will find a sincere desire to serve you in the most efficient and economical manner possible without compromising on the traditional J. D. Reed Company standards for highest quality.



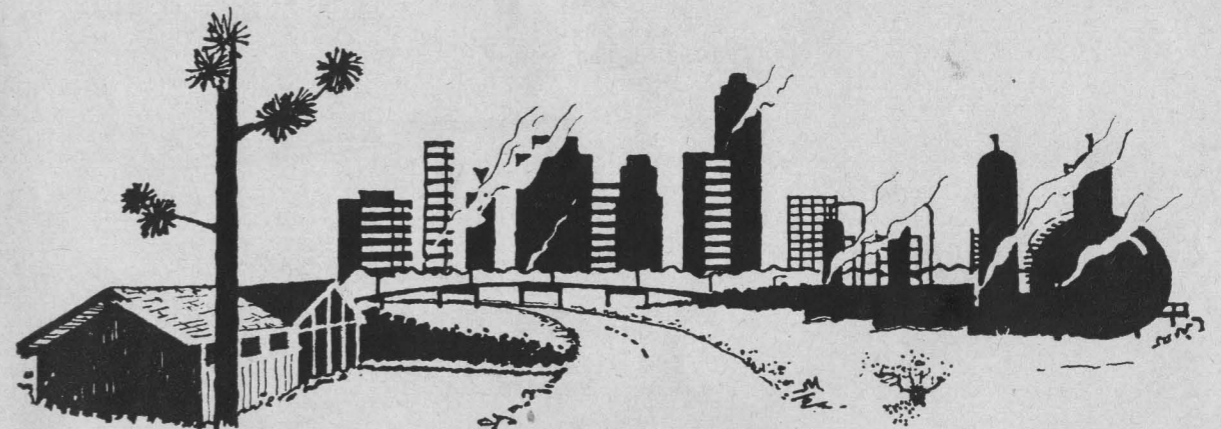
J.D. REED

CO. INC.
 SALES SERVICE
Beechcraft
 DISTRIBUTOR
 MUNICIPAL AIRPORT
 HOUSTON, TEXAS

PARKER BROS. & CO., INC.

WORLD'S LARGEST PRODUCERS OF OYSTER SHELL

FOR
 CEMENT AND CHEMICAL INDUSTRIES
 FOR
 HIGHWAY AND STREET CONSTRUCTION
 PARKING AREAS AND DRIVES



HOT-MIX ASPHALTIC SHELL CONCRETE READY MIX CONCRETE

FOR
 HOME AND INDUSTRY
 GENERAL OFFICE

P. O. BOX 96

5303 NAVIGATION

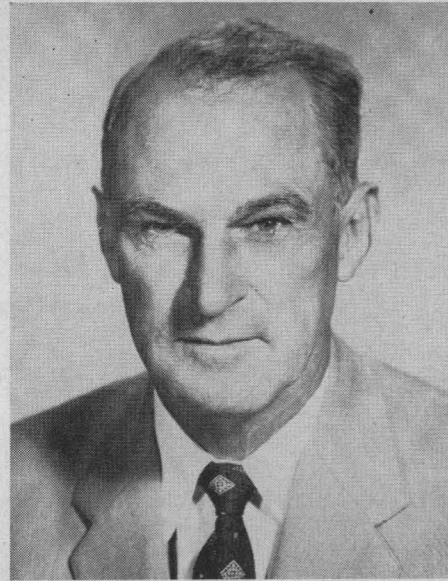
HOUSTON 1, TEXAS

WA 6-4461

Rice Football Coaching Staff



JOE DAVIS



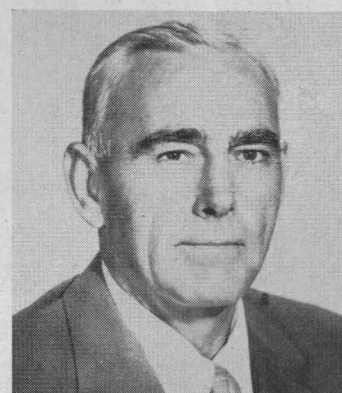
JESS NEELY
Athletic Director
Head Football Coach



CECIL GRIGG



HAROLD "BO" HAGAN



DELL MORGAN



A. M. "RED" BALE



CHARLES MOORE



BILL BEALL

September 6, 1956



DR. WILLIAM V. HOUSTON
President, The Rice Institute

May I again welcome to the Rice campus all of you associated with the visiting team and all who are here essentially to enjoy a good game of football. Much of this campus is so torn up you can hardly see it, but we here are confident that such confusion is the evidence of better things to come.

In recent years, intercollegiate athletics have been subject to much criticism, some of it justified, on the part of sports writers and the general public. May we hope that each of you, interested in good sport, will join with us to help our athletic program contribute to the virtues we really expect of men we admire. In the words of a distinguished leader, "There are among others, loyalties that exclude taking refuge in subterfuges; the spirit of self-renunciation where one is to fade into the background in order that the interests of the team may thereby be furthered; fidelity to obligations undertaken, modesty in victory, serenity in defeat."

W. V. HOUSTON
President

THE RICE INSTITUTE BOARD OF GOVERNORS

TRUSTEES

George R. Brown, Chairman	William A. Kirkland
Lamar Fleming, Jr.	J. Newton Rayzor
John S. Ivy	Gus S. Wortham
	Harmon Whittington

TRUSTEES EMERITUS

Dr. Edgar Odell Lovett	Frederick R. Lummis
	Benjamin Botts Rice

TERM MEMBERS

Daniel R. Bullard	Malcolm Lovett
Robert P. Doherty	W. A. Parish
Francis T. Fendley	Jack C. Pollard
William H. Francis, Jr.	John Thomas Rather, Jr.



Best Wishes to the

BLUE AND GRAY

Cameron
IRON WORKS, INC.

Represented for National Advertising by SPENCER ADVERTISING COMPANY, INC., 271 Madison Ave., New York 16, N. Y.

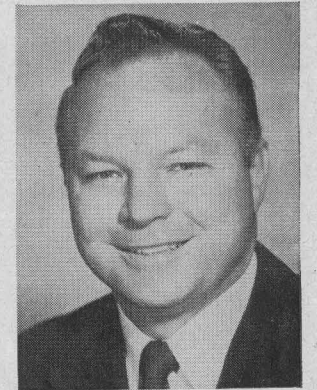
Rice Athletic and Administrative Staff



EMMETT BRUNSON
Business Manager
and Head Track Coach



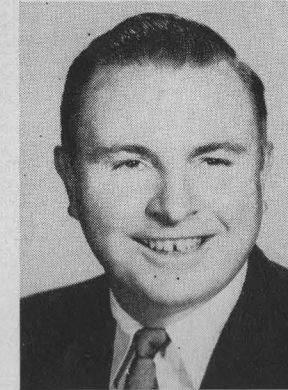
DR. H. E. BRAY
Faculty Representative
to Southwest Conference



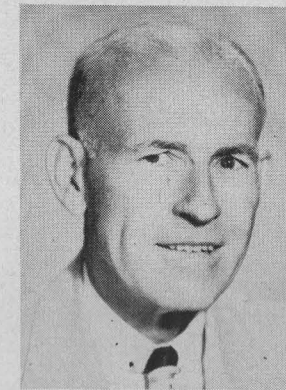
DON SUMAN
Basketball Coach



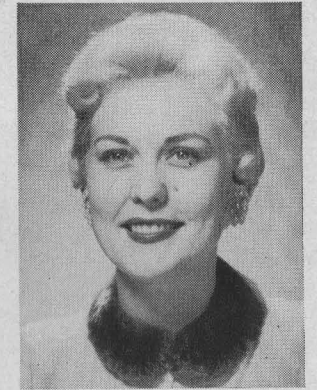
EDDIE WOJECKI
Head Trainer



BILL WHITMORE
Sports News Director



WOOD BOULDIN
Office Manager



MRS. JUNE BASKETTE
Athletic Department
Secretary

The Rice Institute has an able group of coaches and administrative officials who carry out a wide variety of duties required in the presentation of a well-rounded major collegiate athletic program.

The head of the staff in the role of athletic director and football coach is Jess Neely, who this year also serves as president of the American Football Coaches Association. He is in his 17th season this fall as head coach of the Rice Owls, coming to Houston in 1940 after a successful tenure as head coach and athletic director at Clemson College.

Line coach Joe Davis and back coach Cecil Grigg have been with Neely as aides at Rice since 1940 with other members joining the staff at intervals since

down to the newest member, "Bo" Hagan, who is in his first grid season as an Owl coach.

Dr. Bray, pictured above, has been the Rice representative to the Southwest Conference since 1940. In addition to the coaches of other sports and administrative personnel pictured here, two other valuable full time members of the department in the athletic business office are Miss Jane Albertston and Mrs. Mary Klapp. Members of the coaching staff who serve on a seasonal basis for their sports are tennis coach George Richey, swimming coach Frank Bearden, and fencing coach Harold Van Buskirk of the 1956 SWC champions in that field. J. B. Sorsby in the athletic equipment room has been with Rice over 20 years.

RCA VICTOR ANNOUNCES BIG COLOR TV

RCA
VICTOR
FIRST
CHOICE
IN
TV

FROM
\$495⁰⁰



A—Aldrich (21CS781) \$495. Stand optional, extra. B—Stanwyck (21CT783) \$550. C—Westcott console (21CT785) \$595.
D—Chandler Deluxe (21CD793) \$795. E—Strathmore Deluxe modern console (21CD795) \$795.

NOW RCA VICTOR BRINGS YOU EASY-TO-TUNE DEPENDABLE BIG COLOR TV! Choose from 10 new models!

Spectacular "Living Color" picture
... Spectacular sound ... Spectacular
"Color-Quick" tuning! Each RCA
Victor Big Color TV brings you
natural "Living Color" on a big-as-life
screen. "Color-Quick" tuning—
adjust the two color knobs and the
picture pops onto the screen. Four

models feature famous Balanced Fi-
delity Sound—the six Deluxe models
have sensational new 3-speaker
Panoramic Sound for added realism.
All Big Color sets have a 21" screen
(overall diameter)—254 sq. in. of view-
able area. See a Big Color TV demon-
stration and ask about easy terms.



Like having 2 sets in 1. RCA Victor Big
Color TV brings you both black-and-white and
Color programs because it's compatible.
Manufacturer's nationally advertised VHF list prices
shown. Some models slightly higher for West and South.
UHF-VHF tuner optional, extra.

Ask about the exclusive RCA Victor Factory Service Contract

J. A. WALSH & CO.
DISTRIBUTORS

4301 GULF FREEWAY • HOUSTON

1005 SOUTH 4th ST. • BEAUMONT

TONIGHT'S GAME

By BILL WHITMORE
Rice Sports News Director

There is a popular theory you can't keep a good man down for long, and the two determined grid teams that take the field at Rice Stadium will be out to prove that axiom this evening.

Rice Institute and Alabama through the years have ranked among the elite in major college football with a great consistency of winning teams. Last fall, both felt the pull of the inevitable pendulum that swung them to the losing side of the ledger. Now, both face the '56 campaign with potentially stronger teams eager to surprise rivals who might be lulled into complacency by their disappointments of '55.

Tonight's clash will determine which of the two is more ready for the big comeback effort at this early stage, and as a result there should be considerable leather popping down on the turf.

Host school Rice fields the overall youngest and lightest team to represent the Blue and Gray in some years. It is a team, however, with signs of an improved passing attack, much more speed than last fall, and an abundance of enthusiasm.

Jess Neely, the highly respected Owl head grid coach, begins his 17th year at the helm for Rice while serving concurrently in a position of great prestige as president of the American Football Coaches Association. He and his able staff have been working hard to get the Owls prepped for this initial test against the Southeastern Conference invaders.

They will field a starting eleven slated to have five sophomores and a junior who didn't letter last fall to go with five lettermen. Although short on experience, this group and their replacements pack a striking force that can "go for six" from anywhere on the field.

The Blue-Gray intrasquad clashed here last Saturday night before a good turnout of 11,000 revealed the Owls have excellent quarterbacking in the talented hands and feet of Frank Ryan and King Hill. Both smartly engineered the Rice straight T attack as they handle the passing and punting duties and are stellar

running threats while alternating at the man-under post.

The top of the T is an all-sophomore cast among the starters with three fleet lads in Dan Shuford at left half, G. F. Alsbrook at right half, and Raymond Chilton at fullback. All did well with Emmett Brunson's Rice frosh track team last spring, and can go for the long yardage if the line can give them some daylight.

The line is comparatively small, but with such veterans as Larry Whitmire at tackle, Matt Gorges and Charley Thompson at the guards, and Jerry Harris at center, there are some blockers who can perform that chore. The end positions are well manned, with left end Buddy Dial making his varsity debut bearing special notice as a potentially great pass receiver.

Alabama, directed by a veteran of the coaching ranks in J. B. Whitworth who is in his second season at his alma mater, has many new faces in the line-up. The Crimson Tide is expected to benefit from the return of two standout players from the service in center John Snoderly (who played in the Tide's 28-6 loss to Rice in the 1954 Cotton Bowl game) and fullback Ed Pharo. They also have several highly rated newcomers up from one of Alabama's best freshman teams in recent years.

Clay Walls directs the Tide attack of the multiple T, and can call on some dangerous runners, particularly 210-pound left half Jim Loftin. The line is big and mobile.

This is the third meeting of Rice and Alabama, with the Owls twice victorious—in the aforementioned Cotton Bowl game and by 20-0 in the season opener here last year.

The pageantry of Houston's first big football weekend began last night with a pep rally at Rice Gym, and the "color" aspect continues this evening with a splendid halftime show featuring the famed Wharton Junior College Starlettes precision drill team, and music from the Rice Band.

W. Cecil Sisson Mortgage Company

Complete Financial Service

Roy Bean, General Manager

401 Rusk Building

**build your
BANK CREDIT**



with BANK LOANS

The National Bank of

COMMERCE

of Houston

Gulf Building, Houston, Texas "The Bank for All the People"
MEMBER FEDERAL DEPOSIT INSURANCE CORPORATION

*stay Modern
with automatic*
GAS
APPLIANCES

- COOKING
- REFRIGERATION
- HOUSE HEATING
- AIR CONDITIONING
- WATER HEATING
- CLOTHES DRYING

UNITED GAS
SERVING THE *Gulf South*



Like fond parents, we at Brown & Root continuously view Rice Stadium with pride of accomplishment. Reviewing statistics perhaps you can understand why. Brown & Root built this great stadium as a public service and without compensation in the record time of nine months.

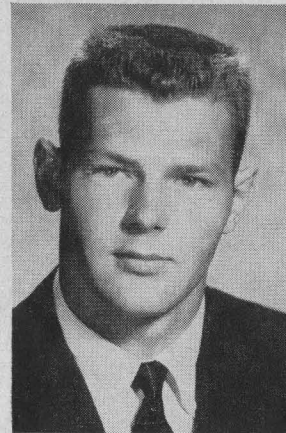


BROWN & ROOT, INC.
Engineers • Constructors

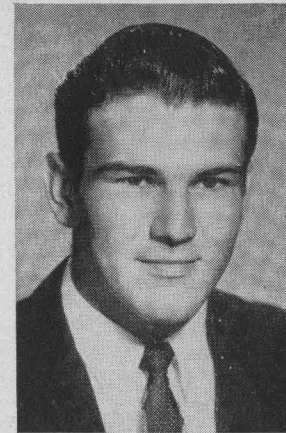
CABLE ADDRESS - BROWNBLT
POST OFFICE BOX 3, HOUSTON 1, TEXAS

Represented for National Advertising by SPENCER ADVERTISING COMPANY, INC., 271 Madison Ave., New York 16, N. Y.

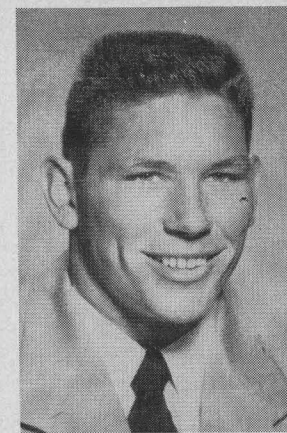
'56 RICE OWLS



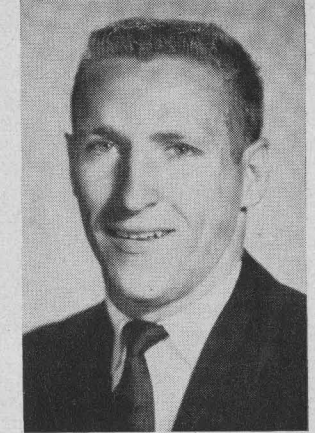
SONNY SEARCY
10—Halfback



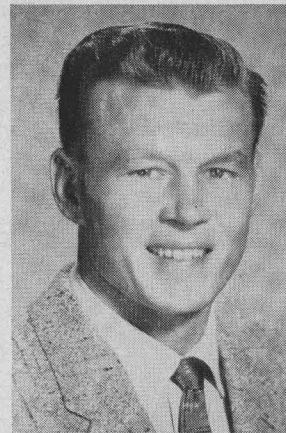
KEN WILLIAMS
11—Halfback



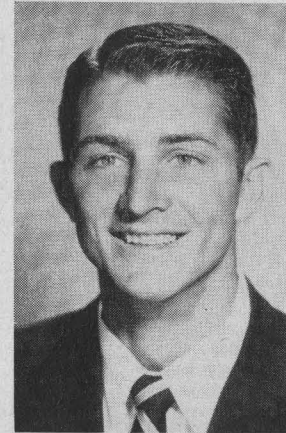
PAT BAILEY
14—Halfback



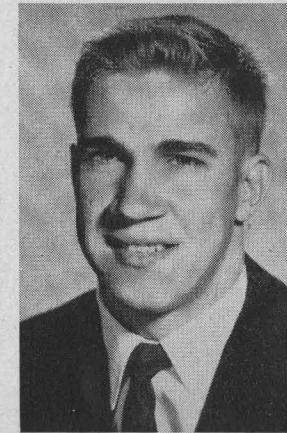
PAUL ZIPPERLEN
15—Halfback



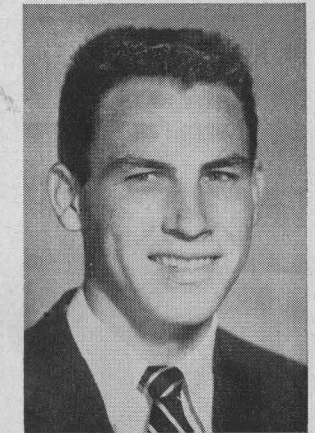
RICHARD STONE
18—Halfback



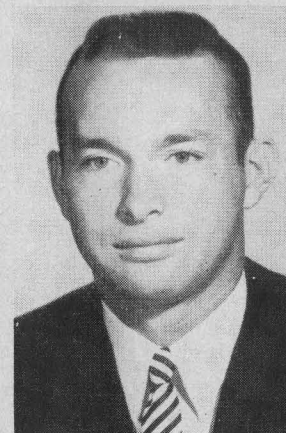
G. F. ALSBROOK
19—Halfback



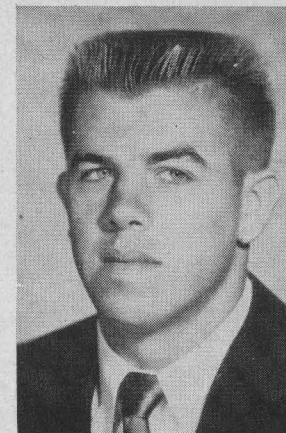
WADE RODGERS
23—Quarterback



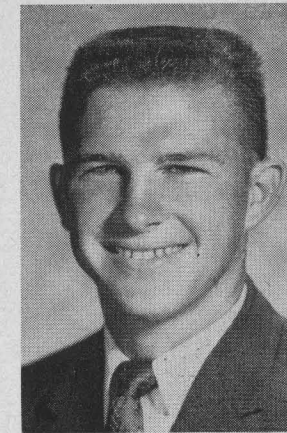
FRANK RYAN
24—Quarterback



PHIL HARRIS
25—Quarterback



KING HILL
26—Quarterback



RAYMOND CHILTON
31—Fullback

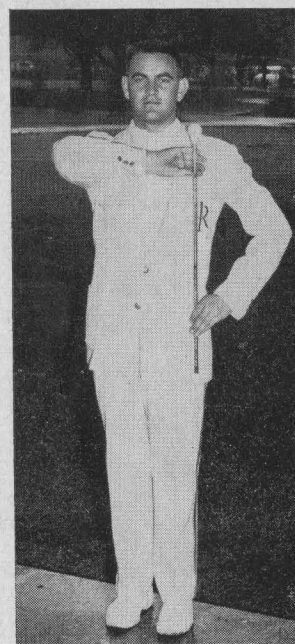


GENE JONES
37—Guard

The Rice Athletic Association Would Appreciate Your Patronizing Our Advertisers



HOLMES McNEELY
Director, Rice Band



LARRY BURTON
Drum Major

**BEST WISHES TO THE OWLS
FOR AN OUTSTANDING SEASON**



THE HOUSTON SPORTS SHOP
4705 S. MAIN
Phone JA 3-8660 - JA 8-2131
Open 9 AM to 6 PM Daily

'56 RICE BAND

"We've got a hard working, eager group of youngsters with top leadership among our veterans. We'll have to depend on some inexperienced boys to come through at a few key positions, but they have the ability to do it. This group works hard in practice, and the boys want to make a good showing. I think my charges will give a good account of themselves when they take the field at Rice Stadium for the Alabama game, and for the rest of the season."

Coach Jess Neely talking about his Rice football team? Nope. That was the message from Holmes McNeely, the able and hard working director of the Rice Band, as he sent his charges through a rugged workout as the 1956 season began.

The chore of organizing a college band for its most necessary role to provide the sound and color that adds so much to the entertainment of an afternoon or evening of football is a big one. The duties and problems of a band director, in fact, are quite similar to those of the football coach. He must assemble a group of men of above average ability in a specific phase of their field, organize them into a unit, equip them, and prepare them to perform for big audiences.

The Rice Band especially is appreciative of the consistent good turnouts of the fans at the annual Rice intrasquad Blue-Gray grid games that provide a good part of the funds that pays for the band's uniforms and instruments.

This year, as in the past, the 70-piece Rice Band will provide the music and halftime performances at the Rice football games, will play at the Owl basketball home games, and entertain at various other events.

Members of the band at Rice all participate on a volunteer basis, and devote many of their hours away from the classroom and study sessions to provide the entertainment and inspiration that comes from their music at these events.

Officials of the band in addition to director McNeely include faculty advisors Samuel G. McCann, director of admissions at Rice, and associate dean for students Guy T. McBride, Jr. Student officers for this school year are James Alexander, president; Port Baughman, vice-president and publicity; Larry Belcher, business manager; Larry Burton, drum major; Tom Souther, assistant drum major; Harris Wood, student conductor; Eldgridge Custer, librarian; and Fred Brisman, publicity.

And a final word for the Rice Band—If any of you fans who read this know of some current high school students who have good classroom records worthy of the qualifications to enter Rice Institute and who also can play a mean trumpet or some other instrument, tip off Mr. McNeely where he can contact them. Just as Coach Neely and staff are always on the lookout for those good halfbacks or guards to carry on the fine tradition of Rice participation in major college football, the band director is eager to locate good students who can help out in the trombone section or the like.

South End Building Materials Co.

**READY MIX CONCRETE
SAND — GRAVEL — CEMENT**

South Houston Plant
5102 Galveston Road
Phone MI 5-3328

South Main St. Plant
Gassmer Drive and Post Oak
Phone MA 3-8379

Kirby Drive Plant, 4830 Kirby Drive — Phone JA 9-9131



**HOWE & WISE
CONSULTING ENGINEERS**

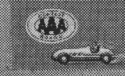
JASON HUMBER

W. F. SMITH

The Rice Athletic Association Would Appreciate Your Patronizing Our Advertisers



U.S. OLYMPIC COMMITTEE



AMERICAN AUTOMOBILE ASS'N



AMATEUR ATHLETIC UNION



NAT'L COLLEGIATE ATHLETIC ASS'N



NAT'L AERONAUTIC ASS'N



AMERICAN POWER BOAT ASS'N



NAT'L HORSE SHOW ASS'N

Longines

THE WORLD'S MOST HONORED WATCH

Official Watch for the

RICE GAMES

Quality leader among the finest watches of the world is Longines—winner of 10 World's Fair Grand Prizes and 28 Gold Medals for excellence and elegance, highest Observatory Honors for accuracy.

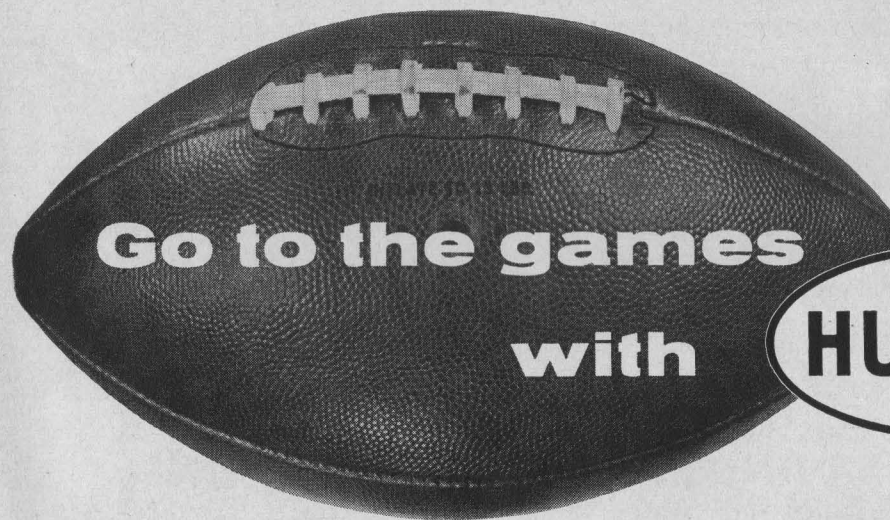
Of special interest to sportsmen is a series of highly efficient Longines Automatic Watches employing an exclusive self-winding principle. They are shock-resistant, anti-magnetic, with unbreakable mainsprings; many are waterproof*. These outstanding Longines watches are priced from \$75 to \$195.

*as long as crystal, back and stem are intact.



Longines
Oslo Automatic.
14K gold waterproof* case.
Sweep second hand. \$195.

SOLD AND SERVICED
BY MORE THAN
4000 LEADING JEWELERS WHO
PROUDLY DISPLAY THIS EMBLEM



Stop for service under the Humble sign

Drive to as many games as you can.
Listen to Humble broadcasts,
watch Humble telecasts, of those you can't attend.

HUMBLE OIL & REFINING CO.

"The Official Watch for Timing this Game is Longines . . . The World's Most Honored Watch"

REX THE TAILOR

Clothing Headquarters for Rice Students

315 TRAVIS

GULFGATE SHOPPING CITY

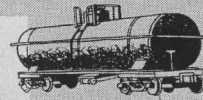
HOUSTON, TEXAS

★ *The Southwest's
Finest
and reasonable, too!*

WELDON CAFETERIA

4916 SOUTH MAIN

- Home of "Pik Nik Chik"
- Open Daily 11:00 a.m. to 8:30 p.m.
- Free Parking



producers of

Heavy Chemicals for industry

CONSOLIDATED CHEMICAL
INDUSTRIES INC.

640 ESPERSON BUILDING • HOUSTON 2, TEXAS

5818

2 LOCATIONS

TO SERVE YOU

SYSTEMATIC
AVING
PELLS
UCCESS



3% ON SAVINGS

University
SAVINGS & LOAN ASSOCIATION

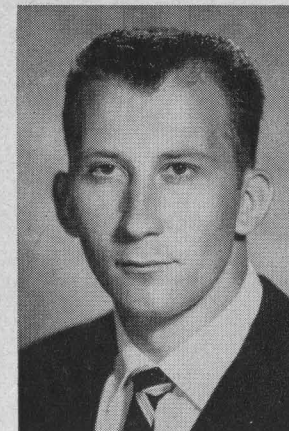
SAVING ACCOUNTS INSURED

6135 KIRBY DRIVE IN THE VILLAGE

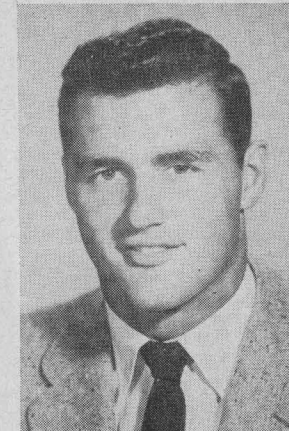
• 5229 BELLAIRE BLVD. IN BELLAIRE

The Rice Athletic Association Would Appreciate Your Patronizing Our Advertisers

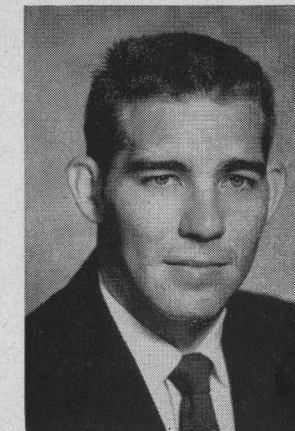
'56 RICE OWLS



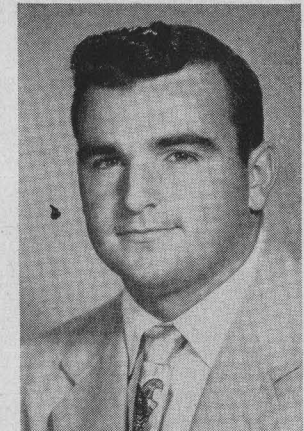
HOWARD HOELSHER
39—Fullback



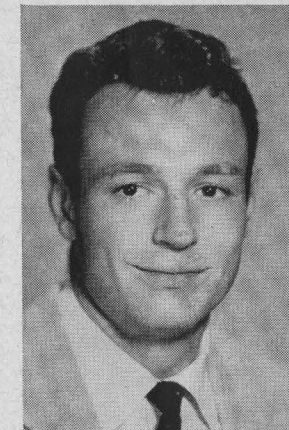
JACK THROCKMORTON
42—Fullback



BOBBY WILLIAMS
43—Halfback



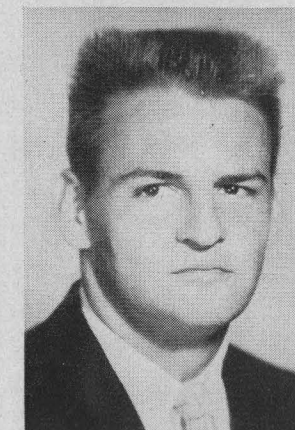
JERRY HALL
44—Halfback



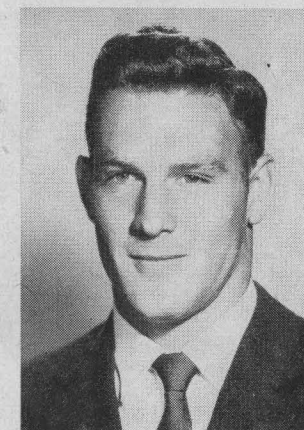
DAVID KELLEY
45—Fullback



LANNY FIFE
46—Halfback



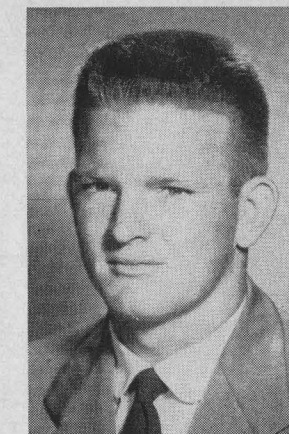
VIRGIL MUTSCHINK
47—Halfback



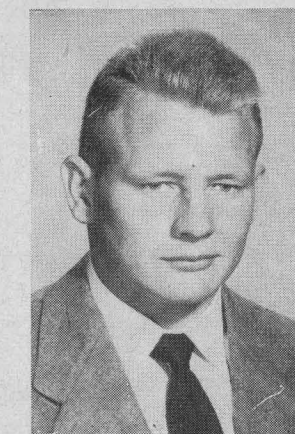
DAN SHUFORD
48—Halfback



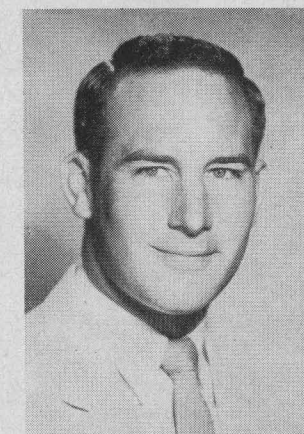
JERRY HARRIS
50—Center



BRUCE HENDRICKSON
54—Center



ALBERT JOHNSON
55—Center

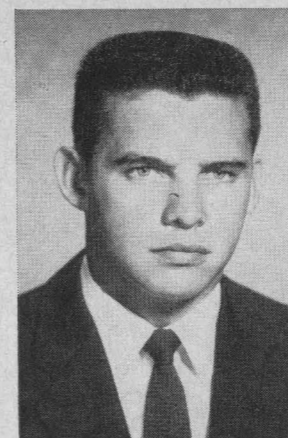


PEDRO CRAWFORD
56—Guard

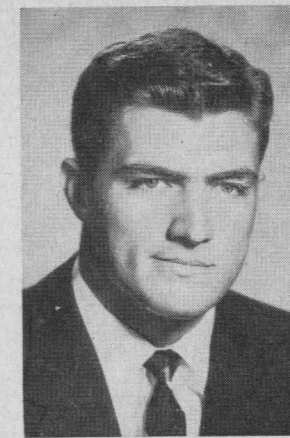


COHEN HOUSE—(THE FACULTY CLUB)

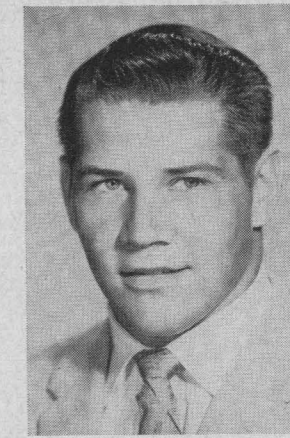
'56 RICE OWLS



RON KRAMER
57—Center



KEN KORGES
58—Tackle



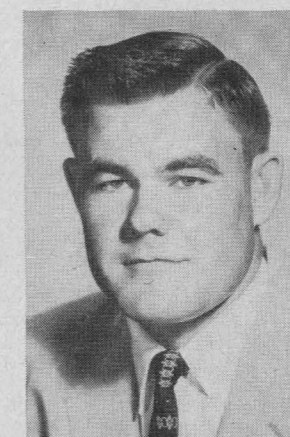
MATT GORGES
60—Guard



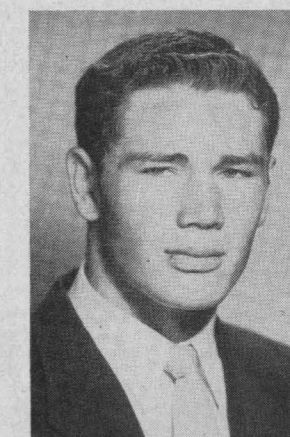
LARRY ROBERTS
61—Guard



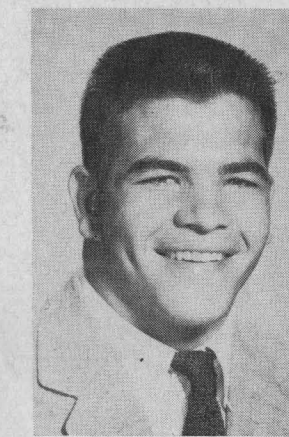
MACK KENNEDY
62—Guard



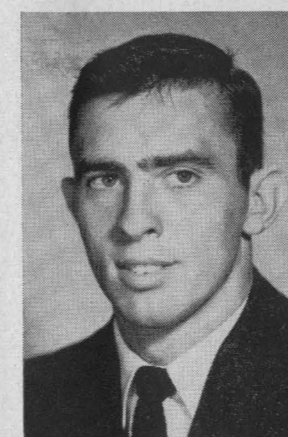
BOBBY DOAN
63—Guard



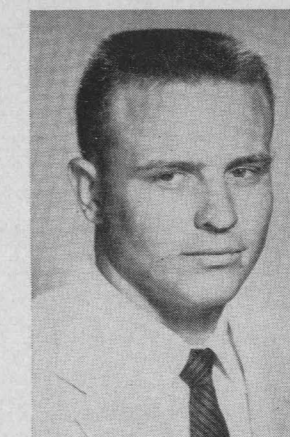
CLIFFORD McCRAW
64—Guard



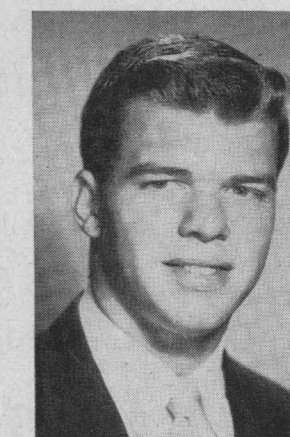
CHARLES KNIGHT
65—Guard



CHARLES THOMPSON
66—Guard



R. T. LUCE
68—Guard



HART PEEBLES
69—Guard



SONNY EVERETT
70—Tackle

Ask for Our Donuts
At All Games

THE
Big Donut

After the Game . . .
Have a Donut
Party!

JA 2-1109

2631 BISSONNET (Off Kirby Dr.)
Drive-In Windows & Coffee Lounge

5327 WESTHEIMER
(In Yorktown Shopping Center)

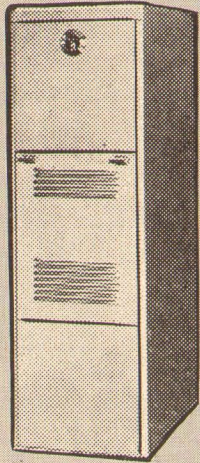
At the games it's . . .

JASMINE FRANKS AND HAM SANDWICHES

(Always Government Inspected)

H O U S T O N P A C K I N G C O M P A N Y
• 3301 NAVIGATION • CApitol 7-2361

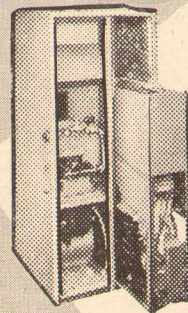
WINTER OR SUMMER YOU WILL WIN WITH...



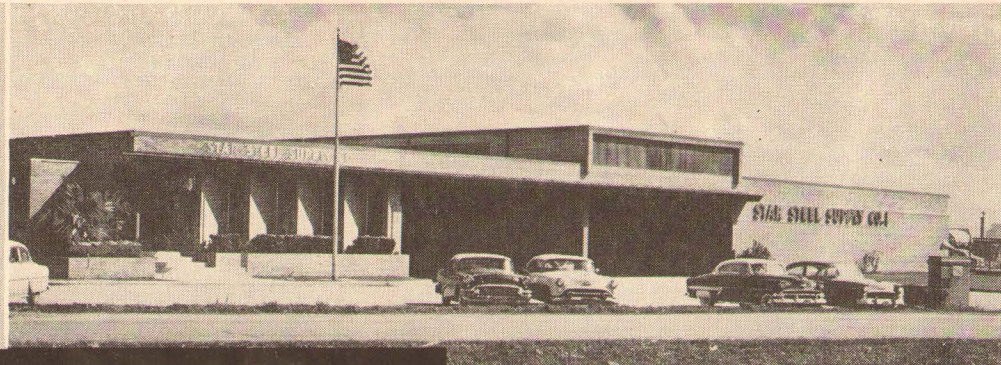
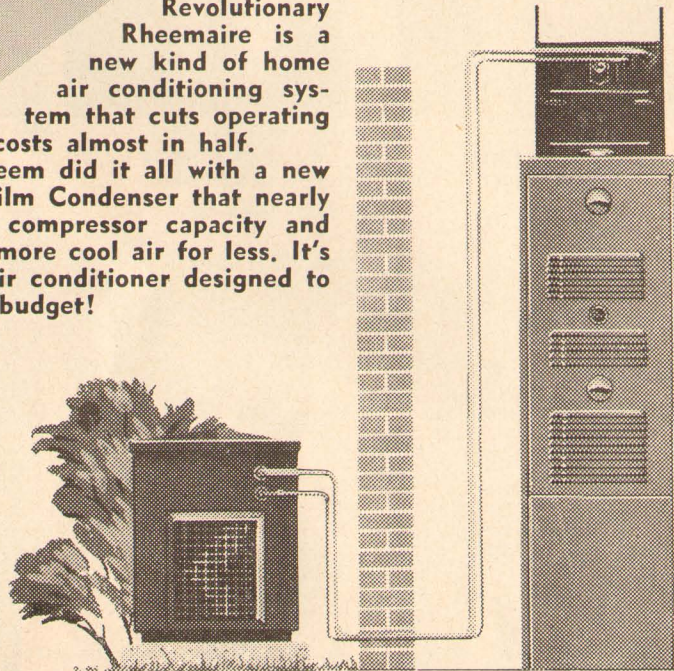
There's a model on the Rheem Team to fit your heating needs. A Rheem heater will keep every room in your home comfortably warm at all times.

Revolutionary Rheemaire is a new kind of home air conditioning system that cuts operating costs almost in half.

Rheem did it all with a new Air Film Condenser that nearly doubles compressor capacity and gives you more cool air for less. It's the central air conditioner designed to fit the average budget!



This new Rheem Year-rounder keeps every room in your home at an ideal temperature all year round. To fully understand this wonderful new Rheem you have to imagine your home delightfully cool all summer, and luxuriously warm all winter.



WHOLESALE
DISTRIBUTORS



**STAR
STEEL
SUPPLY**
C O M P A N Y

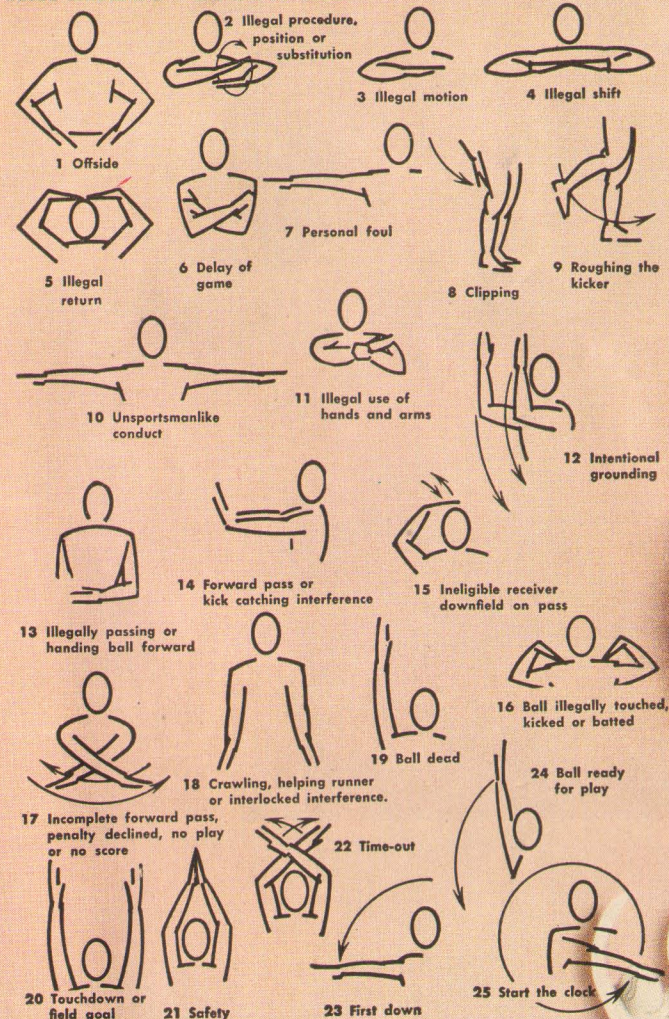
FOR THE NAME OF YOUR NEAREST DEALER
OR ANY INFORMATION CALL A STAR
STEEL REPRESENTATIVE—JA 9-4111

STAR STEEL SUPPLY COMPANY
9411 Almeda Road, P. O. Box 14242
HOUSTON 21, TEXAS

REFRESH

DRINK
Coca-Cola
REG. U.S. PAT. OFF.

REFEREES' SIGNALS



SEE PAGE 20 FOR PENALTIES



HOUSTON COCA-COLA BOTTLING COMPANY ★ 2800 BISSONNET

Live **M**odern, Boy...Smoke **L&M**!

My Chesterfields *Satisfy* the Most!



RICE

PROBABLE STARTING LINEUP

No.	Name	Position
84	BUDDY DIAL	LE
73	LARRY WHITMIRE	LT
60	MATT GORGES	LG
50	JERRY HARRIS	C
66	CHARLES THOMPSON	RG
77	J. D. SMITH	RT
88	JAMES BRIGGS	RE
24	FRANK RYAN	QB
48	DAN SHUFORD	LH
19	G. F. ALSBROOK	RH
31	RAYMOND CHILTON	FB

THE SQUAD

10	Sonny Searcy, LH	46	Lanny Fife, LH	69	Hart Peebles, RG
11	Ken Williams, RH	47	Virgil Mutschink, LH	70	Sonny Everett, LT
14	Pat Bailey, RH	48	Dan Shuford, LH	71	Phillip Dunn, RT
15	Paul Zipperlen, RH	50	Jerry Harris, C	72	Thurman Terry, RT
18	Richard Stone, RH	54	Bruce Hendrickson, C	73	Larry Whitmire, LT
19	G. F. Alsbrook, RH	55	Albert Johnson, C	74	Claude White, RT
23	Wade Rodgers, QB	56	Pedro Crawford, RG	75	Don Phillips, RT
24	Frank Ryan, QB	57	Ronald Kramer, C	76	Jim Steitle, LT
25	Phil Harris, QB	58	Ken Korges, RT	77	J. D. Smith, LT
26	King Hill, QB	60	Matt Gorges, LG	78	James Adams, LT
31	Raymond Chilton, FB	61	Larry Roberts, RG	79	Jim Cauley, RT
37	Gene Jones, FB	62	Mack Kennedy, RG	81	Gene Miller, RE
39	Howard Hoelscher, FB	63	Bobby Doan, LG	82	David Harris, RE
42	Jack Throckmorton, FB	64	Clifford McCraw, RG	84	Buddy Dial, LE
43	Bobby Williams, LH	65	Charles Knight, LT	85	Lester Veltman, LE
44	Jerry Hill, FB	66	Charles Thompson, LG	86	Twyman Ash, LE
45	David Kelley, FB	68	R. T. Luce, LG	87	John Held, LE
				88	James Briggs, RE
				89	David Mantor, LE
				90	Donald Gee, RE
				91	Charles Pollard, RE

ALABAMA

PROBABLE STARTING LINEUP

No.	Name	Position
80	CHARLES GRAY	LE
76	WES THOMPSON	LT
61	DON HOLCOMB	LG
52	JOHN SNODERLY	C
60	DOUG POTTS	RG
75	JIM CUNNINGHAM	RT
83	DON OWENS	RE
10	CLAY WALLS	QB
20	JIM LOFTIN	LH
23	DON COMSTOCK	RH
40	DON KINDERKNECHT	FB

THE SQUAD

10	Jimmy Woodward, QB	42	Max Kelly, FB	71	Sid Neighbors, LT
11	Clay Walls, QB	43	Danny Wilbanks, FB	72	Glen Graham, LT
12	Jim Mayben, QB	44	Bobby Sirmon, FB	73	Roy Forbus, RT
13	Charles Nelson, QB	50	Kenneth Roberts, C	74	Roy Vickery, LT
14	Bobby Smith, QB	51	Billy Brooks, C	75	Jim Cunningham, RT
20	Jim Loftin, LH	52	John Snoderly, C	76	Wes Thompson, LT
21	Bobby Jackson, LH	53	Benny Dempsey, C	77	Arthur Scott, RT
22	George Salem, LH	60	Doug Potts, RG	80	Charles Gray, LE
23	Don Comstock, LH	61	Don Holcomb, LG	81	Henry Johnston, RE
24	Tommy Mosley, RH	62	Grover Whaley, RG	82	Pete Reeves, LE
30	Carrol Daniel, RH	63	Cecil Thornton, RG	83	Don Owens, RE
31	Jim Bowdoin, RH	64	Phil Clark, LG	84	Dodd Holt, LE
32	Jerry McBee, RH	65	Gerald Maxwell, RG	85	Ralph Blaylock, RE
34	Marshall Brown, RH	66	Billy Rains, RG	86	Don Grammer, LE
40	Don Kinderknecht, FB	67	Robert Bookmeier, LG	87	Willie Beck, RE
41	Ed Pharo, FB	68	Charles Spano, RG	88	Baxter Booth, LE
		70	Dave Sington, RT	89	Jerry Lambert, RE

PAUSE ★ ★ ★



LOSS OF FIVE YARDS

- 1—Taking more than five times out during either half (except for replacement of injured player).
- 2—Illegal delay of game.
- 3—Failure to complete substitution before play starts.
- 4—Violation of kickoff formation.
- 5—Player out of bounds when scrimmage begins.
- 6—Putting ball in play before Referee signals "Ready-for-play".
- 7—Failure to maintain proper alignment of offensive team when ball is snapped. Also, backfield man illegally in motion.
- 8—Offside by either team or encroachment on neutral zone.
- 9—Attempt to draw opponents offside.
- 10—Crawling by runner.
- 11—Illegal forward pass (includes intentional grounding of forward pass). Also loss of down.
- 12—Taking more than two steps after Fair Catch is made.
- 13—Player on line receiving snap.
- 14—Any violation of the scrimmage formation.

LOSS OF FIFTEEN YARDS

- 15—Team not ready to play at scheduled time.
- 16—Violation of rules during intermission.
- 17—Illegal return of suspended player.
- 18—Interference by member of offensive team with defensive player making pass interception. (Also loss of down).
- 19—Interfering with the opportunity of a player of the receiving

PENALTIES

- team to catch a kick.
- 20—Illegal use of hands or arms by offensive player.
 - 21—Tackling or blocking defensive player who has made fair catch.
 - 22—Roughing the kicker.
 - 23—Piling up, hurdling, clipping.
 - 24—Tackling player out of bounds, or running into player obviously out of play.
 - 25—Coaching from sidelines.
 - 26—Failure to stop one full second following shift.
 - 27—Defensive holding.
 - 28—Invalid Signal for Fair Catch.

OTHER PENALTIES

- 29—Striking an opponent with fist, forearm, elbow or locked hands, kicking or kneeling — Mandatory disqualification of offending player plus loss of fifteen yards.
- 30—Foul within the one yard line — half the distance to the goal.
- 31—Interference by defensive team on forward pass — passing team's ball at spot of foul.
- 32—Forward pass being touched by ineligible receiver beyond the line of scrimmage—loss of fifteen yards from spot of preceding down and loss of a down.
- 33—Illegal touching of kicked ball within opponent's ten yard line — touchback.
- 34—Flagrantly rough play or unsportsmanlike conduct — Mandatory disqualification plus loss of fifteen yards.
- 35—Eligible pass receiver who goes out of bounds and later touches a forward pass — loss of down.

SEE PAGE 17 FOR OFFICIAL SIGNALS

DRINK

Coca-Cola

COPYRIGHT 1956, THE COCA-COLA COMPANY

HOUSTON COCA-COLA BOTTLING COMPANY ★ 2800 BISSONNET

Fine Printing

As one of the South's largest printing firms, Gulf Printing Company has the equipment and experienced personnel to give your printed message the distinction so necessary in attracting the eye and retaining the interest of the reader. Whether it be a catalog, broadside, brochure folder, book or magazine—if it comes from Gulf it bears the hallmark of fine printing.

GULF PRINTING CO.

3301 BUFFALO DRIVE



**COMPLETE
METROPOLITAN
SERVICE
WITH
RESIDENTIAL
CONVENIENCE**



*Serving Southwest Houston, West
University Place and Southside Place*

AUTO TELLER SERVICE

UNIVERSITY STATE BANK

JA 6-1211

5117 KELVIN DRIVE AT TANGLEY

ONE OF AMERICA'S GREAT MULTIPLE-LINE GROUPS

American General Life Insurance Company
Life, Accident, Sickness, Hospitalization and Group

American General Investment Corporation
Mortgage Loans — Home Loans

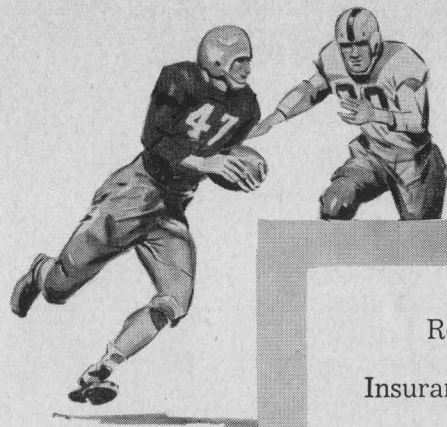
American General Insurance Company
Fire and Casualty Insurance



**American General
COMPANIES**

HOUSTON ★ TEXAS

Represented for National Advertising by SPENCER ADVERTISING COMPANY, INC., 271 Madison Ave., New York 16, N. Y.



Enjoy the game today-

Remember — Adequate Protection through Life
Insurance is as American as the Great Game of Football

GREAT SOUTHERN

Life Insurance Company

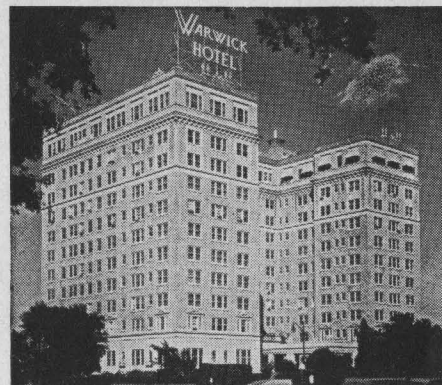
Founded 1909

4310 Dunlavy • Houston, Texas

E. P. Horne, Manager Percy E. Arthur, Asst. Mgr.
Houston Agency 4310 Dunlavy — Houston, Texas

AT LUNCH OR DINNER

You can always enjoy a delicious meal in the
Warwick's Famous Crystal Dining Room
A PLEASURE TO SERVE YOU



R. T. CULLATHER, Manager

WARWICK HOTEL
AND APARTMENTS
Houston 1, Texas



FIRST STATE BANK of BELLAIRE

*Serving Bellaire
and Adjacent Area*

AUTO TELLER SERVICE

FIRST STATE BANK

BELLAIRE, TEXAS

MA 3-4463

5123 BELLAIRE BOULEVARD

MEMBER FEDERAL DEPOSIT INSURANCE CORPORATION

1956 RICE FOOTBALL SCHEDULES

VARSITY

September 22.....	Rice — Alabama —	at Houston	8:00
October 6.....	Rice — Louisiana State —	at Houston	8:00
October 13.....	Rice — Florida —	at Gainesville, Fla.	2:30
October 20.....	Rice — Southern Methodist —	at Houston	8:00
October 27.....	Rice — University of Texas —	at Houston	8:00
November 3.....	Rice — University of Utah —	at Houston	2:00
November 10.....	Rice — Arkansas —	at Fayetteville	2:00
November 17.....	Rice — Texas A. & M. —	at College Station	2:00
November 24.....	Rice — Texas Christian —	at Houston	2:00
December 1.....	Rice — Baylor —	at Waco	2:00

FRESHMAN

October 19.....	Rice — S.M.U. Colts —	at Dallas	2:00
October 26.....	Rice — Texas Shorthorns —	at Houston	8:00
November 2.....	Rice — Del Mar Jr. College —	at Houston	8:00
November 8.....	Rice — Texas A. & M. Fish —	at College Station	8:00
November 22.....	Rice — Baylor Cubs —	at Houston	2:00



TO FOLLOW YOUR TEAM . . .

CHARTER a
**CONTINENTAL
TRAILWAYS**
BUS

**CONTINENTAL
TRAILWAYS**

FA 3-2101

300 TRAVIS STREET

*More Convenience
More Comfort
More Economical
Go Anywhere Anytime*

The Rice Athletic Association Would Appreciate Your Patronizing Our Advertisers

FACTS ABOUT RICE INSTITUTE

- Rice is a privately supported, co-educational tuition-free university, which offers courses in the basic fields of liberal arts, science, engineering, and architecture and physical education.

- The Institute was founded by William Marsh Rice who provided the original endowment. With its campus of three hundred acres, Rice opened its doors to students in 1912.

- Dr. William V. Houston has been President of Rice since 1946. He came to the Institute from the California Institute of Technology where he was chairman of the Division of Physics, Mathematics and Electrical Engineering. President Emeritus, Dr. Edgar Odell Lovett served Rice as President from its opening in 1912 until the appointment of Dr. Houston.

- The student body comprises approximately 1800 men and women with some 250 of these doing graduate work toward advanced degrees.

- Because no student is charged tuition, in order to keep instructional costs within the limitations of the income from endowment and the generosity of friends it has been necessary since 1924 to restrict the size of the student body. This is done by controlling the size of the incoming freshman class. Admission is based on a number of criteria designed to indicate whether the student will do well after arriving on the campus. The high school record is examined, and importance is placed on the scores attained on the College Entrance Board Examination. In addition, each applicant is considered on the basis of a personal interview.

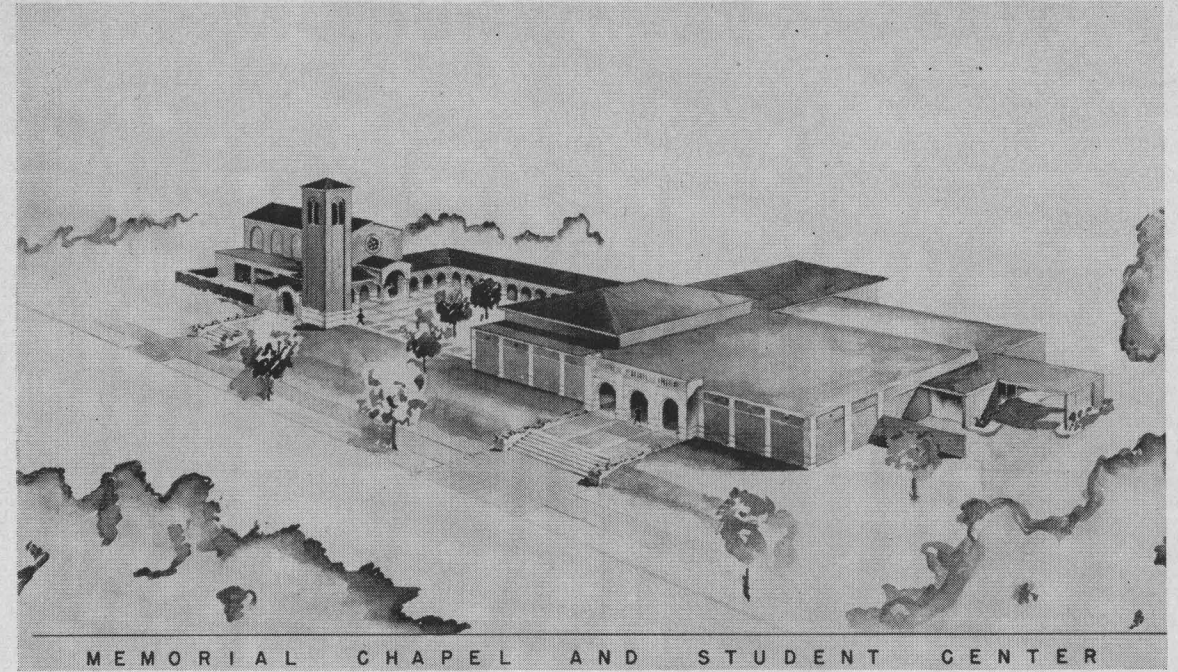
Each year within certain fields many more apply than can be admitted. Thus those who wish to attend Rice should make application early in their senior year of high school.

- At its forty-third commencement held last June Rice awarded the following degrees; 17 Doctor of Philosophy, 25 Masters, 267 Bachelor of Arts, 70 Bachelor of Science in Engineering and Architecture, and 22 Bachelor of Science in Physical Education.

- The Fondren Library houses 274,000 volumes of scientific, technical books and volumes in the humanities. About 12,000 volumes are added each year. Rice subscribes to many learned journals.

- Rice continually strives to have a faculty of intellectual vigor. In addition to the regular faculty, this year will see four internationally known scholars on the campus as visiting professors: Dr. E. Harris Harbison, Professor of History at Princeton; Dr. Louis Landré, Professor University of Paris; Sir John Sheppard, formerly provost of King's College, Cambridge; Sir Richard V. Southwell, former Director of the Imperial College of Science and Technology, London. Also, a number of post-doctoral Fellows and research associates from universities in this country and abroad are at Rice each year to engage in the various research programs under way at the Institute.

- Many varied social and extracurricular activities are available on the campus to the student body. These activities range from the religious organizations, to intramural sports, to social events and dances.



MEMORIAL CHAPEL AND STUDENT CENTER

MEMORIAL CHAPTER AND STUDENT CENTER

Rice Builds for the Future

In order to better serve the nation and to meet the educational challenge ahead, Rice Institute continually strives to provide the physical facilities important to present day university education.

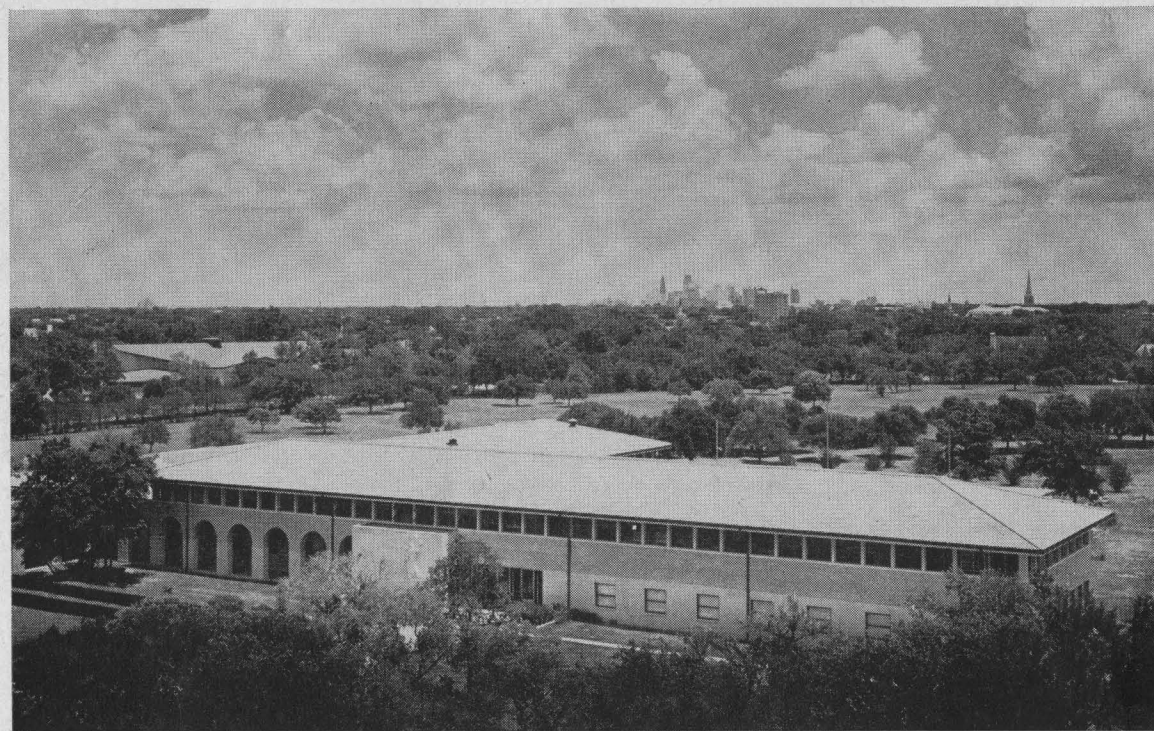
Through the generosity of alumni and friends Rice is making progress toward meeting this need. Within a short time, by the construction of two buildings, Rice will have new facilities for the Departments of Geology and Biology. In addition, there will be a Memorial Chapel and Student Center.

Already work is under way on the residential college building program which includes both altering and adding to existing men's residential halls to convert them into the physical form required for residential colleges and building the college for women students to house girls on the Rice campus for the first time. The residential colleges for both men and women will include facilities for group living and dining within

each college of 220 men or women students. Each college will be provided with residential suites for faculty Fellows and will also possess the unique feature of individual houses for Masters and their families.

It is hoped that the buildings now being provided together with the planning which has preceded the present construction will encourage the formation of strong individual college student governments in the tradition of the Rice Institute. Each freshman, during his first year on the campus, will select a college in which he will spend the remainder of his undergraduate career.

Throughout the planning for the residential college system, care has been taken through provisions for group living, student government, and faculty in residence to develop in the undergraduate a sense of community responsibility and an informed curiosity.



ABERCROMBIE ENGINEERING LABORATORY—RICE CAMPUS

1956 ALABAMA VARSITY FOOTBALL ROSTER

No.	Player	Pos.	Age	Height	Weight	Class	Letters	Home Town
10	Jimmy Woodward	QB	20	5-10	173	Jr.	V	Tuscaloosa
11	Clay Walls	QB	20	6-0	175	Jr.	55	Bessemer
12	Jim Mayben	QB	19	5-11	170	Soph	F	Attalla
13	Charles Nelson	QB	21	6-0	187	Soph	RS	Opp
14	Bobby Smith	QB	19	6-1	179	Soph	F	Brewton
20	Jim Loftin	LHB	20	6-3	210	Jr.	V	Dothan
21	Bobby Jackson	LHB	20	6-1	179	Soph	F	Mobile
22	George Salem	LHB	20	6-0	204	Soph	F	Birmingham
23	Don Comstock	LHB-RHB	20	6-1	201	Jr.	T	Scottsbluff, Neb.
24	Tommy Mosley	LHB	20	5-9	161	Soph.	RS	Blyheville, Ark.
30	Carrol Daniel	RHB	20	5-11	181	Jr.	V	Athens
31	Jim Bowdoin	RHB	21	6-1	190	Sr.	54-55	Elba
32	Jerry McBee	RHB	20	5-10	175	Jr.	55	Birmingham
34	Marshall Brown	RHB-LHB	22	6-0	177	Jr.	55	Ladysmith, Wisc.
40	Don Kinderknecht	FB	24	5-11	195	Jr.	55	Hays, Kansas
41	Ed Pharo	FB	23	5-10	193	Sr.	52	Birmingham
42	Max Kelly	FB	21	6-1	201	Sr.	54-55	Cullman
43	Danny Wilbanks	FB	19	6-0	200	Soph.	F	Tallassee
44	Bobby Sirmon	FB	19	6-0	192	Soph.	F	Georgiana
50	Kenneth Roberts	C	19	6-0	204	Soph.	F	Anniston
51	Billy Brooks	C	21	6-0	205	Sr.	54-55	Tuscaloosa
52	John Snoderly	C	23	6-0	191	Sr.	52-53	Montgomery
53	Benny Dempsey	C	19	6-1	210	Soph.	F	Brantley
60	Doug Potts	RG	23	6-2	212	Sr.	54-55	Evergreen
61	Don Holcomb	LG	21	6-1	209	Sr.	T	Shattuck, Okla.
62	Grover Whaley	RG	19	5-11	202	Soph.	F	Wedowee
63	Cecil Thorton	RG	19	6-2	196	Soph.	F	Centre
64	Phil Clark	LG	19	5-11	194	Soph.	F	Columbus, Ga.
65	Gerald Maxwell	RG	22	6-1	203	Jr.	V	Jasper

1955 Rice Institute Owls Varsity Football Roster

No.	Name	Pos.	Wt.	Ht.	Age	Class	Exp.	Home Town
10	Sonny Searcy	L HB	177	6-0	19	Soph.	FL	Fort Worth
11	Ken Williams	R HB	182	6-2	21	Jr.	1 VL	Yoakum
14	Pat Bailey	R HB	175	5-11	19	Soph.	FL	Hawkins
15	Paul Zipperlen	R HB	170	5-10	21	Sr.	1 VL	Rosebud
18	Richard Stone	R HB	170	5-11	20	Soph.	None	Navasota
19	G. F. Alsbrook	R HB	180	6-0	20	Soph.	FL	Galveston
23	Wade Rodgers	QB	171	6-0	19	Soph.	FL	Osceola, Ark.
24	Frank Ryan	QB	183	6-2	20	Jr.	1-Sqd	Fort Worth
25	Phil Harris	QB	180	5-10	21	Sr.	2-Sqd	Burnett
26	King Hill	QB	205	6-3	20	Jr.	1 VL	Freeport
31	Raymond Chilton	FB	180	6-0	19	Soph.	FL	Corpus Christi
37	Gene Jones	FB	188	6-0	19	Soph.	FL	Woodson
39	Howard Hoelscher	FB	205	6-1	20	Jr.	JC	Weimar
42	Jack Throckmorton	FB	210	6-2	21	Jr.	2 VL	LaMarque
43	Bobby Williams	L HB	164	5-11	21	Jr.	1-Sqd	Missouri City
44	Jerry Hall	FB	193	6-1	22	Sr.	2 VL	Palestine
45	David Kelley	FB	173	5-11	21	Jr.	2-Sqd	Houston
46	Lanny Fife	L HB	180	6-2	22	Sr.	1 VL	Mart
47	Virgil Mutschink	L HB	175	5-10	21	Jr.	1 VL	Giddings
48	Dan Shuford	L HB	170	5-11	19	Soph.	FL	Alice
50	Jerry Harris	C	202	6-2	21	Sr.	1 VL	Marshall
54	Bruce Hendrickson	C	203	6-3	19	Soph.	FL	Port Arthur
55	Albert Johnson	C	190	5-11	21	Sr.	2 VL	Odessa
56	Pedro Crawford	RG	195	6-0	21	Jr.	1-Sqd	Grandfalls
57	Ronald Kramer	C	205	6-2	21	Jr.	JC	Freeport
58	Ken Korges	RT	207	6-2	19	Soph.	FL	Weatherford
60	Matt Gorges	LG	202	6-0	20	Jr.	1 VL	Harlingen
61	Larry Roberts	RG	190	6-0	19	Soph.	FL	Mount Pleasant
62	Mack Kennedy	RG	190	6-0	19	Soph.	FL	Ingleside

Campus Cleaners

COLD STORAGE AND FURRIERS

Jackson 6-1403

6117 KIRBY DRIVE

HOUSTON 5, TEXAS

The South's Largest and Most Modern Fur Storage Vault

66	Billy Rains	RG	19	5-11	201	Soph.	F	Moulton
67	Robert Bookmeier	LG	19	6-1	201	Soph.	F	LaPort City, Iowa
68	Charles Spano	RG	21	5-11	225	Jr.	JC	Navasota, Tex.
70	Dave Sington	RT	18	6-1	221	Soph.	F	Birmingham
71	Sid Neighbors	LT	21	6-1	226	Soph.	F	Northport
72	Glen Graham	LT	24	6-0	205	Jr.	V	Florence
73	Roy Forbus	RT	21	6-3	200	Jr.	V	Alexander City
74	Roy Vickery	LT	20	6-3	218	Jr.	V	Atlanta, Ga.
75	Jim Cunningham	RT	22	6-2	206	Sr.	55	Winfield
76	Wes Thompson	LT	24	6-1	224	Sr.	51-53	Decatur
77	Arthur Scott	RT	22	6-2	216	Jr.	V	Jasper
80	Charles Gray	LE	18	6-1	196	Soph.	F	Pell City
81	Henry Johnsston	RE	20	6-2	181	Jr.	JC	Dothan
82	Pete Reeves	LE	19	5-11	191	Soph.	F	Bessemer
83	Don Owens	RE	20	6-1	219	Soph.	F	Memphis, Tenn.
84	Dodd Holt	LE	18	6-1	185	Soph.	F	Jasper
85	Ralph Blaylock	RE	19	6-2	200	Soph.	F	Cullman
86	Don Grammer	LE	20	6-1	184	Soph.	F	Bessemer
87	Willie Beck	RE	19	6-2	200	Soph.	F	Northport
88	Baxter Booth	LE	19	6-2	201	Soph.	F	Athens
89	Jerry Lambert	RE	24	6-0	190	Sr.	52	Alabama City

Campus Cleaners

COLD STORAGE AND FURRIERS

Jackson 6-1403

6117 KIRBY DRIVE

HOUSTON 5, TEXAS

The South's Largest and Most Modern Fur Storage Vault

63	Bobby Doan	LG	190	5-11	19	Soph.	FL	Raymondville
64	Clifford McCraw	RG	190	6-0	20	Soph.	1-Sqd	Bowie
65	Charles Knight	LT	195	6-2	19	Soph.	FL	Albany
66	Charles Thompson	LG	202	6-0	20	Jr.	1 VL	Paris
68	R. T. Luce	LG	188	5-11	19	Soph.	FL	Nederland
69	Hart Peebles	RG	187	6-0	18	Soph.	FL	Houston
70	Sonny Everett	LT	210	6-3	20	Soph.	FL	Breckenridge
71	Phillip Dunn	RT	210	6-1	19	Soph.	FL	Woodville
72	Thurman Terry	RT	225	6-2	19	Soph.	FL	Richland Sprs.
73	Larry Whitmire	LT	210	6-3	21	Jr.	1 VL	Corpus Christi
74	Claude White	RT	200	6-2	20	Soph.	1-Sqd	Fort Worth
75	Don Phillips	RT	230	6-2	20	Soph.	1-Sqd	Garrison
76	Jim Steitle	LT	200	6-1	19	Soph.	1-Sqd	San Antonio
77	J. D. Smith	LT	210	6-4	20	Soph.	FL	Richland Sprs.
78	James Adams	LT	216	6-1	19	Soph.	FL	San Juan
79	Jim Cauley	RT	208	6-3	21	Soph.	1-Sqd	Kingsville
81	Gene Miller	RE	205	6-4	19	Soph.	FL	Vernon
82	David Harris	RE	195	6-2	20	Soph.	FL	San Antonio
84	Buddy Dial	LE	175	6-1	19	Soph.	FL	Magnolia
85	Lester Veltman	LE	187	6-0	20	Soph.	1-Sqd	San Antonio
86	Twyman Ash	LE	176	6-2	20	Soph.	FL	Abilene
87	John Held	LE	194	6-1	22	Sr.	2-Sqd	Odessa
88	James Briggs	RE	183	6-0	21	Sr.	1 VL	Smithville
89	David Mantor	LE	180	6-1	20	Jr.	1 VL	Corpus Christi
90	Donald Gee	RE	196	6-2	21	Sr.	1 VL	Burkburnett
91	Charles Pollard	RE	195	6-3	19	Soph.	FL	Henderson

"The Official Watch for Timing this Game is Longines . . . The World's Most Honored Watch"



Pictured above are the medical advisors and head trainer for the Rice Institute athletic department. Left to right, Dr. Jack Brannon, Dr. Ed T. Smith, trainer Eddie Wojecki, and Dr. Hugh Welsh, team physician for the Owls since 1929.

Rice Athletes Get Top Medical and Training Care

The treatment and prevention of athletic injuries—with emphasis on the prevention—is an important phase of the football activities at Rice Institute.

Head trainer Eddie Wojecki has no peer at looking after this particular part of the Rice grid program. He has had over two decades experience in the field, served with the 1952 U. S. Olympic team at Helsinki, Finland, and last year was national chairman of the college athletic trainers' association. He and his aides see that the Owls have the best of equipment designed to give each player maximum protection, and they conduct a modern training room to look after the athletes' daily needs in treatment.

An excellent staff of physicians keep close check on the Owls from a thorough physical examination before practice begins until the season is over.

The official team physician for Rice Institute since 1929 is Dr. Hugh Welsh, while Doctors Ed T. Smith and Jack Brannon work with him in keeping close tab on the Owls' physical condition throughout the year.

In addition, there is a group of consulting medical men whose abilities in specialized fields are put to use when needed. These men are Dr. John Stough, Dr. Charles Dickson, Dr. Fred Lummis, Dr. James Greenwood, Jr., Dr. Cecil Crigler, Dr. L. M. Vaughan, Dr. Larry Schumacher, and Dr. Donald Ruthven (dentist), and Dr. W. H. Worrell, (dentist).



The two young men pictured above play an important "behind the scenes" role in the Rice Institute grid program. On the left is Jim Neely, student manager of the team, and on the right is Gene Antill, student trainer assistant to Eddie Wojecki and student trainer of Lamar High's 1953 state champions in high school days.

ENJOY THE GAME WITH

CAMELLIA ICE CREAM

*The Aristocrat of
The South*



MONEY ??? let's
talk it over...



Drinks in Stadium are cooled with

Texas Ice "Sized Ice"

TEXAS ICE & FUEL COMPANY

Ice Punch Bowls and Carvings in Ice

Available for Special Occasions

6301 Harrisburg

WALnut 3-1601



H. C. "HANK" CRISP
Athletic Director



DR. OLIVER C. CARMICHAEL
President, Alabama University



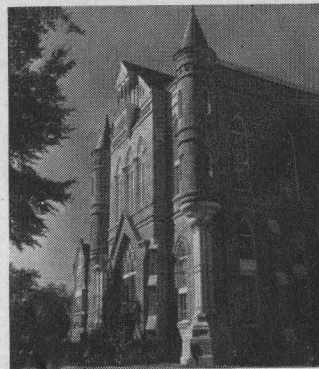
J. B. WHITWORTH
Head Coach

UNIVERSITY OF ALABAMA

The University of Alabama was established in 1820, one year after Alabama was admitted to the Union, and was first opened to students in 1831. Thirty five young men comprised the first student body and the physical plant was not much larger with two dormitories, a chapel, chemistry building, and four faculty homes forming the campus.

Today, one hundred and twenty-five years later, the University has expanded and grown into a well planned seat of learning which has thousands of students studying, living, and playing in hundreds of class rooms, dormitories, and other University buildings. The passing years have seen many great moments and known many outstanding educators and administrators as the University of Alabama has solidified its place as the "Capstone" of the state educational system.

From the ashes of a fire swept campus following the War between the States, the University has developed into the modern institution of today, consisting of thirteen major divisions on the campus and two in Birmingham. Located at Tuscaloosa are: the College of Arts and Sciences, School of Chemistry, School of Commerce and Business Administration, College of Education, College of Engineering and School of Mines, School of Home Economics, School of Law, Graduate School, Extension Division, and Summer School. A new fourteen



CLARK HALL

million dollar medical center is in the making at the Medical College of Alabama in Birmingham. The School of Dentistry is also situated in Birmingham.

Alabama's military record is rich in tradition and color. From the 300 cadets who marched out to meet the enemy in 1865 to the present ROTC units and special classes assigned to the University by the armed forces today, the campus has felt the tread of thousands of American men and women. Since World War I more ROTC students have trained at the University than at West Point.

During the past 11 post war years, a greatly enlarged student body has taxed the University facilities but a tremendous building program, which is still underway, has finally eased the situation. To fully retain the old grace and beauty of the 420 acre main campus area, a rebuilding and renewing project has also been carried on.

The first women students were admitted to the University in 1893 and today some 2000 coeds form a good percentage of the University enrollment. Dr. John M. Gallalee, long time member of the faculty and president since 1948, retired in July, 1953. Dr. Oliver C. Carmichael, a veteran educator and Alabama alumnus, succeeded Dr. Gallalee as president September 1, 1953.

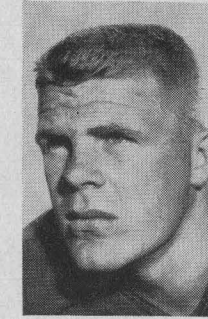
THE ALABAMA PLAYERS



DON OWENS
End



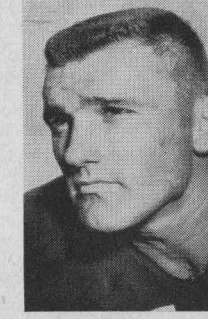
MARSHALL BROWN
Halfback



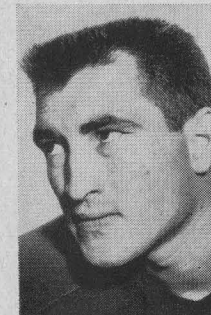
JERRY McBEE
Halfback



MAX KELLEY
Fullback



DON KINDERKNECHT
Fullback



DON COMSTOCK
Halfback



DON HOLCOMB
Guard



JOHN SNODERLY
Center



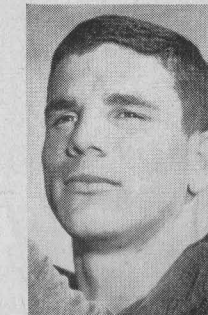
EDDIE PHARO
Fullback



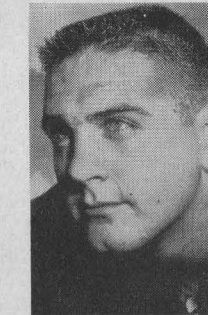
GLENN GRAHAM
Tackle



WES THOMPSON
Tackle



CLAY WALLS
Quarterback



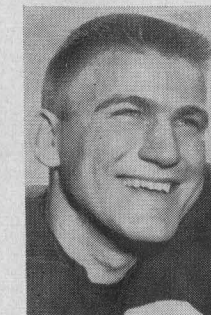
CHARLIE GRAY
End



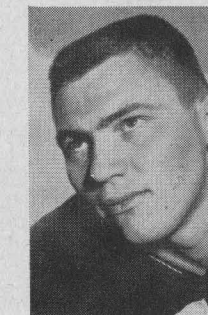
KENNETH ROBERTS
Center



BILLY BROOKS
Center



DOUG POTTS
Guard



JIM CUNNINGHAM
Tackle



DAVE SINGTON
Tackle



JIM LOFTIN
Fullback



JIM BOWDOIN
Halfback

"The Official Watch for Timing this Game is Longines . . . The World's Most Honored Watch"

"The Official Watch for Timing this Game is Longines . . . The World's Most Honored Watch"

RESIDENTIAL

SALES, RENTALS, APPRAISALS
"WANT TO BUY OR SELL—CALL"

COMMERCIAL

Jack Pannell

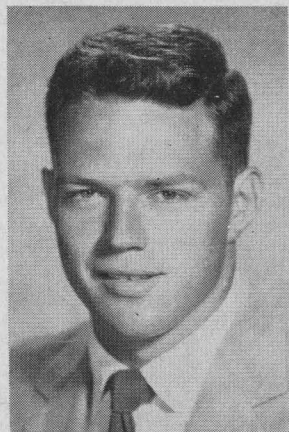
REALTOR

FOR BEST SELECTION OF HOMES

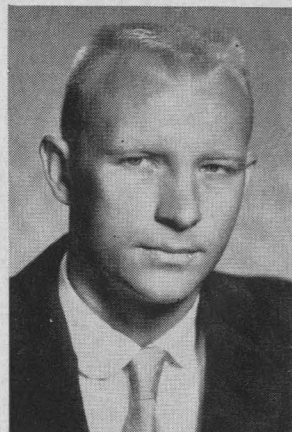
6211 KIRBY DR (In Village)

Office JA 9-3818

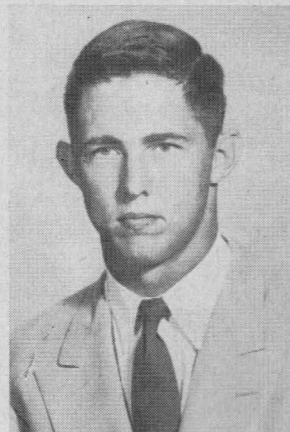
'56 RICE OWLS



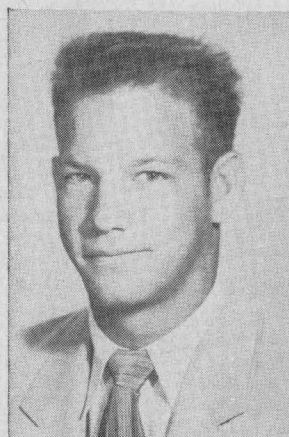
LESTER VELTMAN
85—End



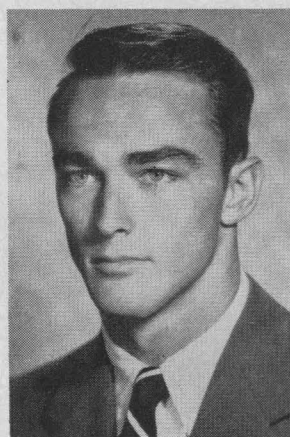
TWYMAN ASH
86—End



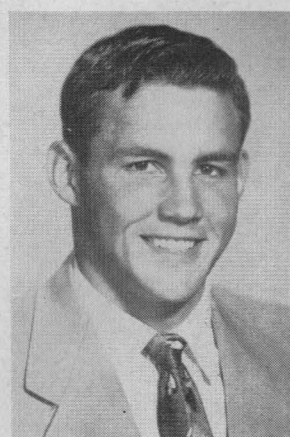
JOHN HELD
87—End



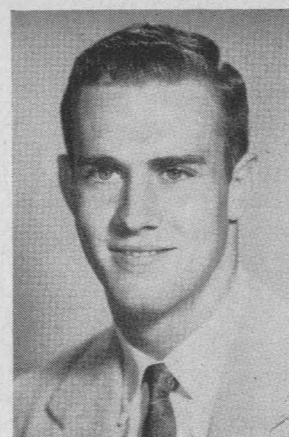
JAMES BRIGGS
88—End



DAVID MANTOR
89—End



DONALD GEE
90—End



CHARLES POLLARD
91—End

BEFORE
AND
AFTER
THE
GAMES

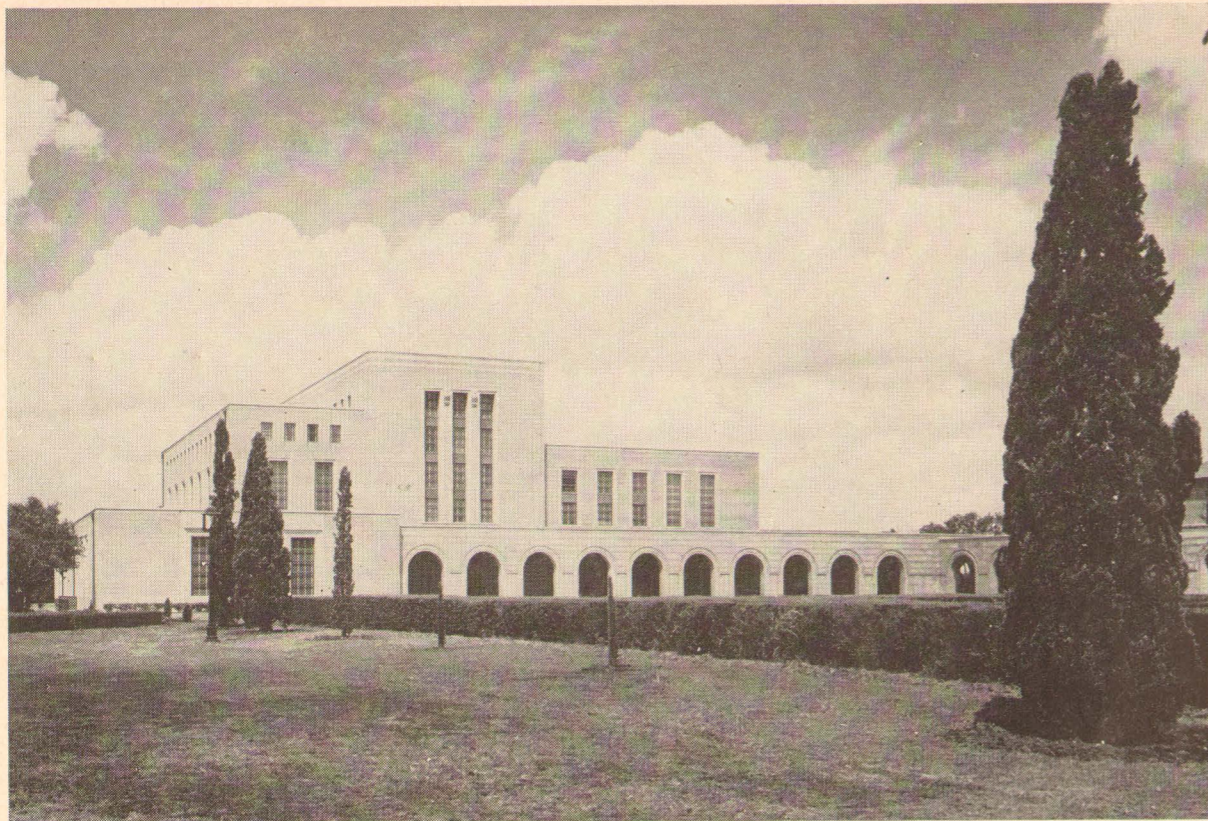
Make the

Shamrock Hilton

Your Headquarters



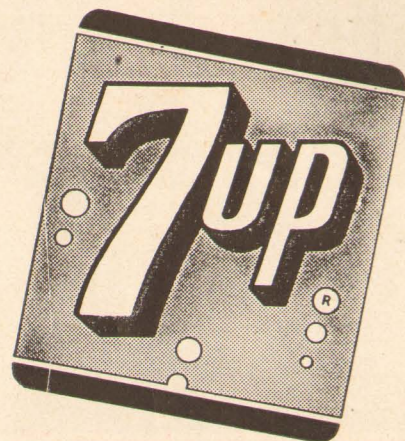
ANDERSON HALL FROM LIBRARY CLOISTER



FONDREN LIBRARY—RICE CAMPUS

Enjoy sparkling, crystal-clear 7-Up! So pure, so good, so wholesome that folks of *all* ages may "fresh up" as often as they like. Get the 24-bottle family supply of 7-Up.

THE ALL-FAMILY DRINK!
YOU LIKE IT...IT LIKES YOU!



COPYRIGHT 1953 BY THE SEVEN-UP COMPANY



The Rice Athletic Association Would Appreciate Your Patronizing Our Advertisers

So Fresh-So Crispy
and LOTS more peanuts!



Best treat of all... the **NEW Cracker Jack** with lots more peanuts!

Try it Today!

NEW Cracker Jack

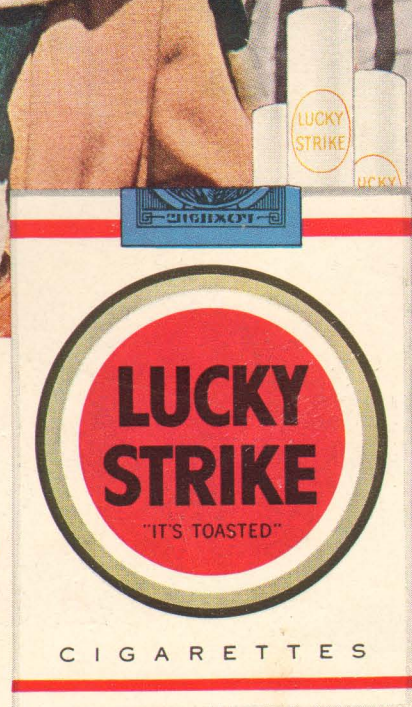
Light up a Lucky—

it's light-up time!



Luckies Taste Better

Cleaner, Fresher, Smoother!



**"IT'S
TOASTED"
to taste
better!**